

ICE NOCTURNE

Only Natural 2026 – Fashion (Apparel)

Gidi Littman

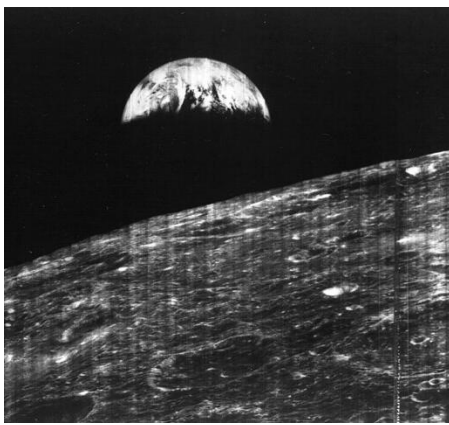
Shenkar College of Engineering, Design and Art



Photographer: Rom Sade

Model: Nevo Amrani

INSPIRATIONS



William Anders, Earthrise (Apollo 8, NASA), 1968



Zaria Forman, 2018



Crispian Heath, Blue Cliff, 2022



Pauta Saila, Bear, 1975



Peter Bremers, Icebergs and Paraphernalia 192, 2010



Georges Méliès, Le Voyage dans la Lune, 1902



Vico Magistretti, Lamp, 1967



Vincent Munier, Animal avalanche. Snow leopard, 2016



Zaria Forman, 2018



Anthony Smith, iceberg #1



Charles Duke, Apollo 16 (NASA), 1972



Leonid Tishkov, Private Moon, 2003

My project explores the Arctic Circle and the surface of the Moon. At first glance, these are distant and unrelated realms, yet they share striking similarities: the connection between them serves as the inspiration for this work. Despite their obvious differences, I identified parallels in the sense of emptiness, coldness, and alienation they evoke, as well as in their vast landscapes, which blur the boundary between reality and imagination. Glaciers and lunar terrain share textures that embody layers, erosion, and geological memory, carrying a sense of distance from everyday experience. Both the Arctic and the Moon remain only partially explored, evoking fear, curiosity, and attraction. Culturally, these spaces are often romanticized as realms of exploration and discovery: where reality and imagination intersect, where achievement meets failure, and where the sublime, the divine, and the eternal coexist. Throughout the project, I examined visual representations of these two environments and the fine arts inspired by them. Images from space missions intertwine with breathtaking nature photography; hyper-realistic oil paintings are placed alongside glass and papier-mâché sculptures; metal designs merge with crafted objects. Together, these elements form a menswear Fall/Winter collection characterized by a light color palette and silhouettes that shift between defined and blurred, rigid and soft, layered and textured.

DESIGN PROCESS



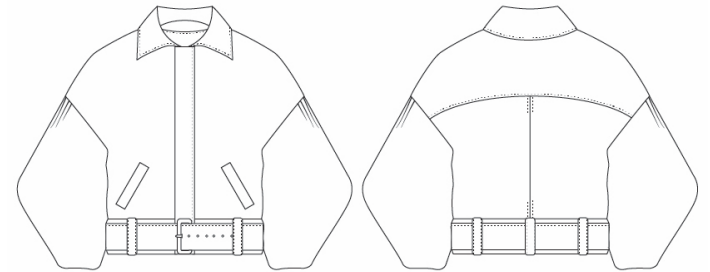
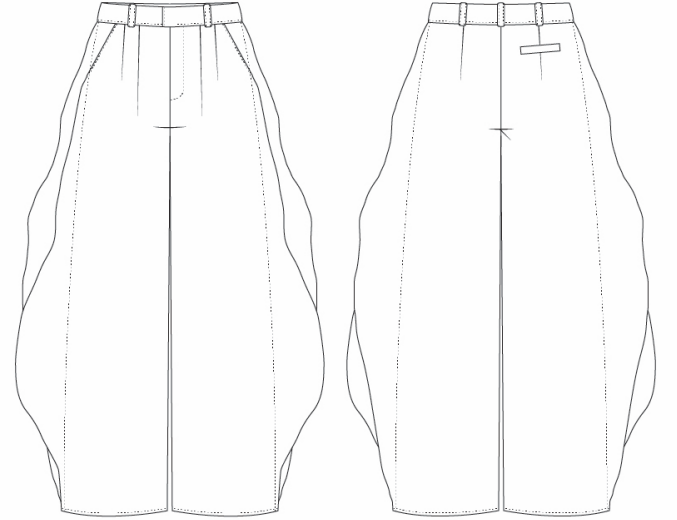
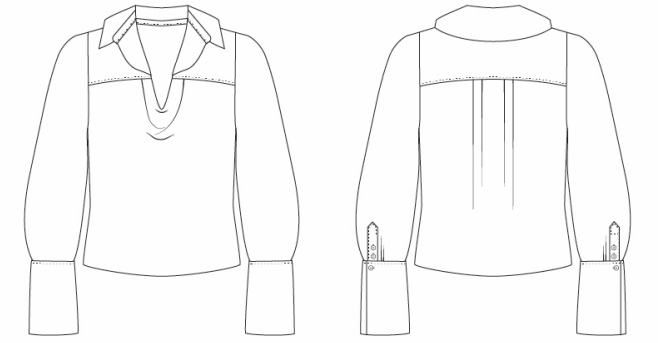
Initial collages created from photographs of existing garments relevant to the project.

COLLECTION

The collection brings together the inspirations and design elements into a light-toned men's Fall–Winter collection made from natural materials, embodying both Arctic and lunar worlds.

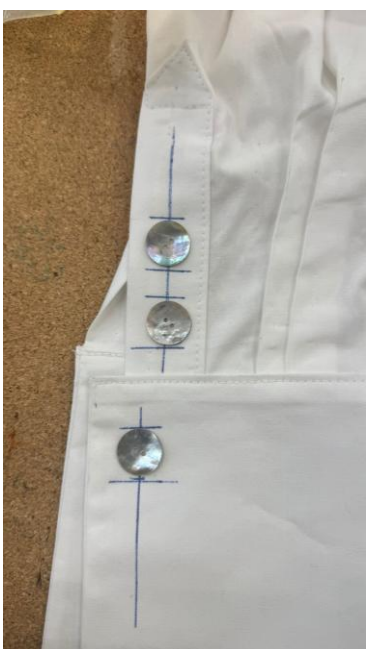
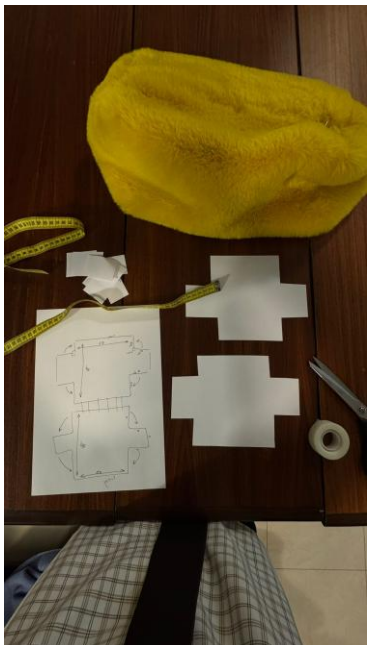


FINAL LOOK



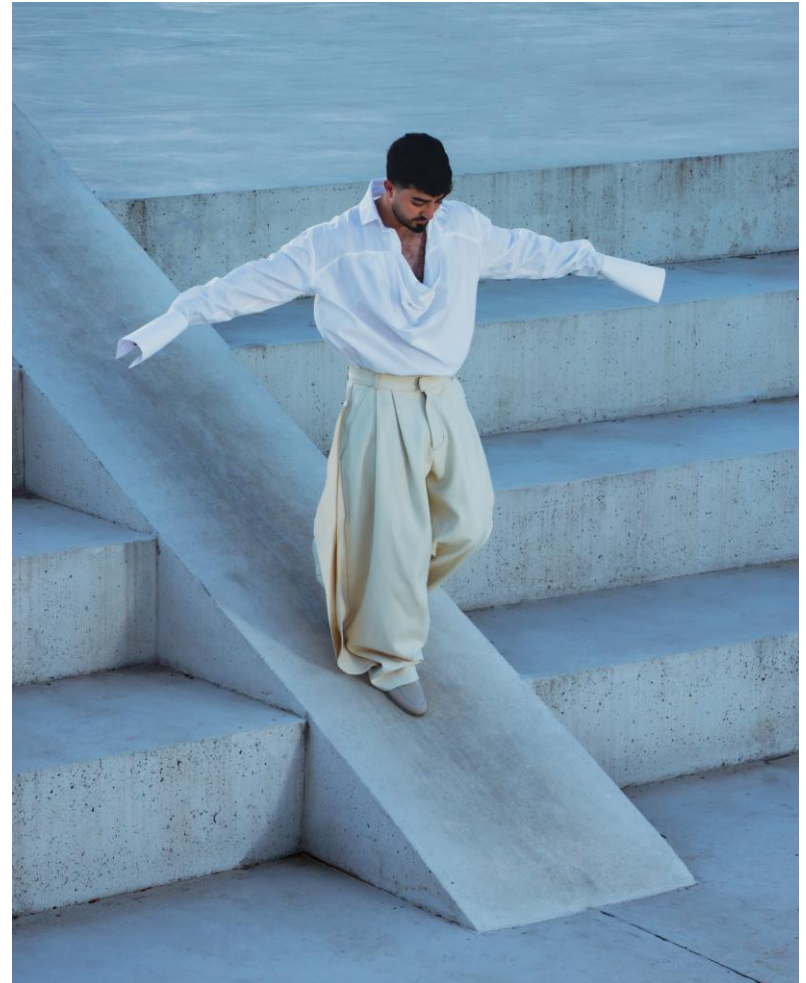
A four-piece men's look: a cotton poplin shirt, wool trousers, a wool jacket, and a wool shawl. The look is accompanied by a carrying bag.

CREATION PROCESS

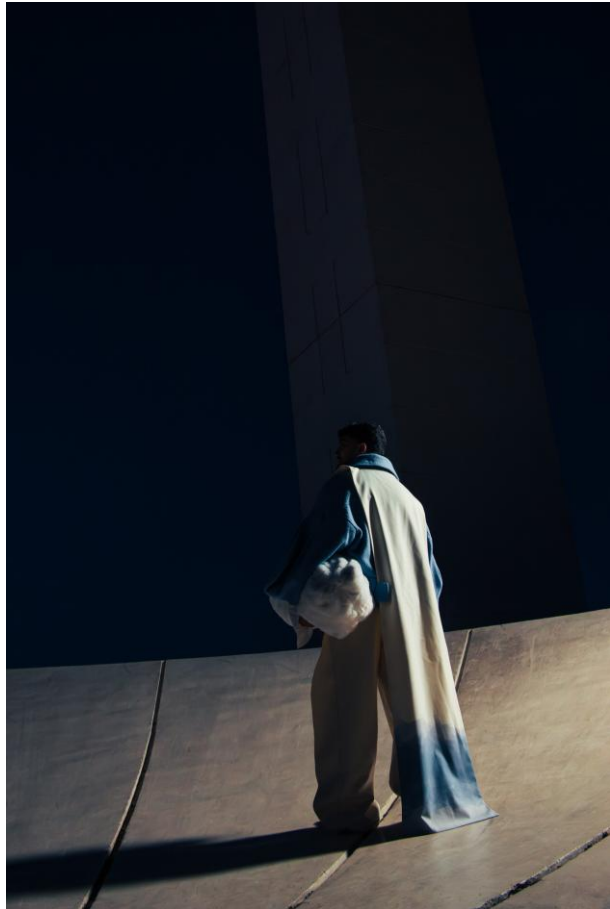


PHOTOSHOOT

The photographs tell a story that moves between reality and imagination, between the natural and the artificial, between stability and fragility. The garment takes on a new dimension in an almost cosmic world reminiscent of the moon, and its movement reveals different angles and new forms inspired by icebergs and the lunar qualities.



Photographer: Rom Sade
Model: Nevo Amrani



Photographer: Rom Sade, Model: Nevo Amrani