

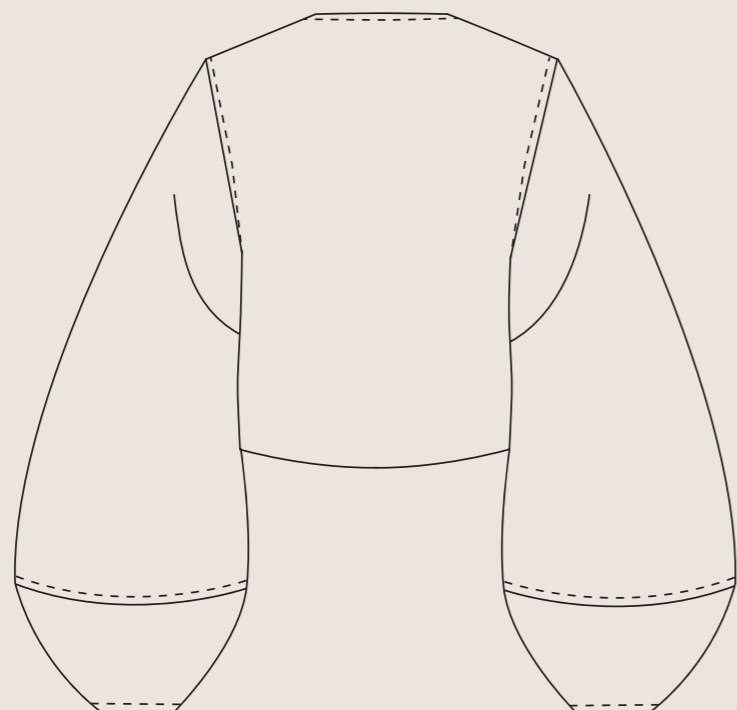
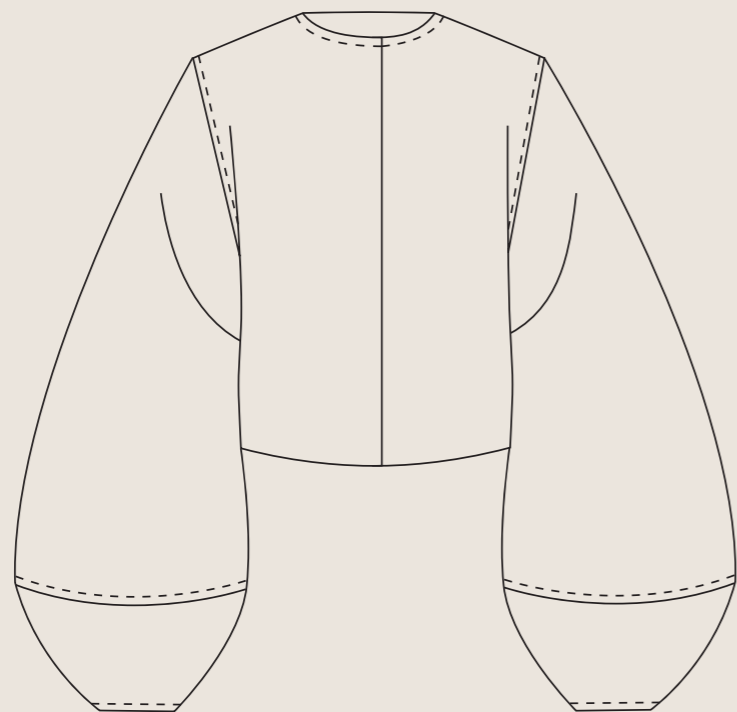
silhouette development

Initial sketches explored how proportion could embody the physical qualities of the peatland. The final silhouette pairs a cropped body with exaggerated sleeves, creating a low centre of gravity and a sense of weight. Rather than representing the landscape literally, the garment responds to its material character through balance, scale and form.



Colour placement developed intuitively throughout the making process, responding to the completion of each naturally dyed fibre batch rather than a predetermined pattern.

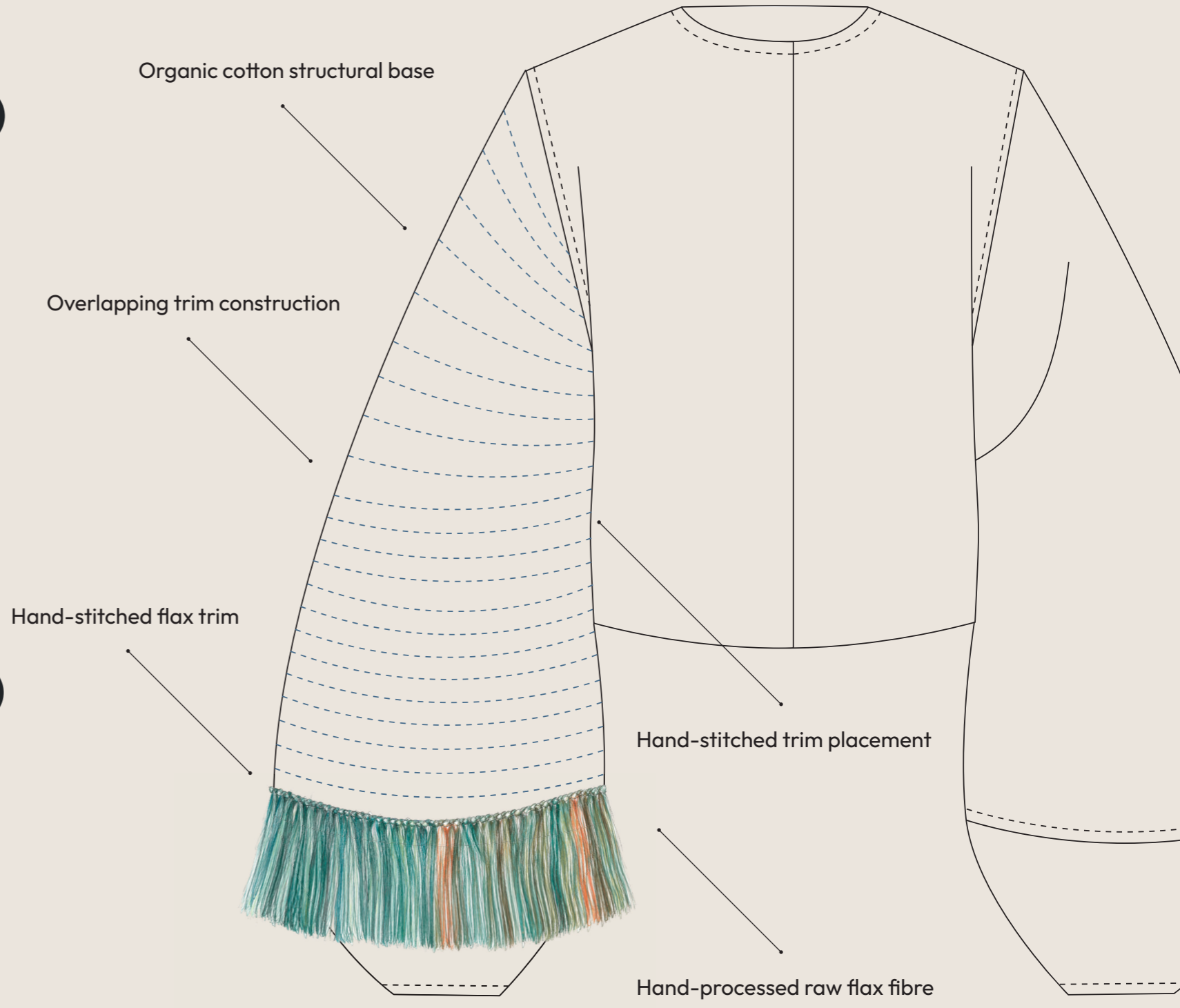
01



01 Structural Base:

Organic cotton garment constructed as a lightweight structural foundation. The cropped body and elongated sleeves establish the garment's exaggerated silhouette while supporting the weight of the flax surface.

02



03

02 Flax Surface System:

Hand-processed flax fibre individually knotted onto cotton tape to create modular trims of varying colour, density and length. Each trim forms a repeatable unit within the overall surface.

03 Construction System

Individual flax trims are hand stitched directly onto the structural base in overlapping rows, creating a dense, fur-like surface. Colour placement developed intuitively as naturally dyed fibre batches were completed, allowing the final composition to emerge through the making process rather than a predetermined pattern.