



VOLUME I - OMNIBENEVOLENT

ALICE ŠIŠMANOVIĆ



tran-seasonal



raw & rustic

wardrobe



looking at my own wardrobe -

- | what do I use most
- | what is adaptable
- | what has lasted for years & not dated?



natural



organic



- > vintage linen french military mattress
- > second-hand 100% pure wool cream blanket
- > antique hemp grain-sack
- > the Dartmoor Shepherd wool clippings
- > raw mulberry silk, silk noil & bark
- > deadstock full cowhide saved from landfill



second-hand | repurposed | 100% composition | organic and natural state



< layers >
ability to swap/change
throughout seasons,
can be built up but
also worn individually



exploring layers | diversity & inclusion | tran-seasonal wear

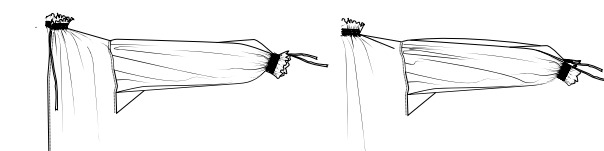
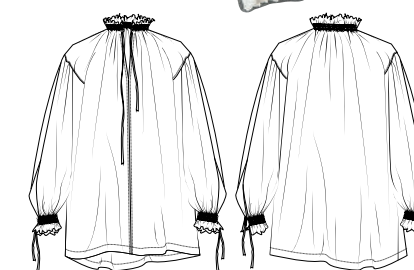
- > no synthetic fibres, all natural & no dye - benefits to wearers health & personal impact.
- > cool in the summer & warm in the winter - pure wool.
- > conscious garments that only need to be purchased once and look better with each wear - result of high quality fabrics & construction.



smocked blouse
> made using rectangles



analysing vintage garments
quality & details

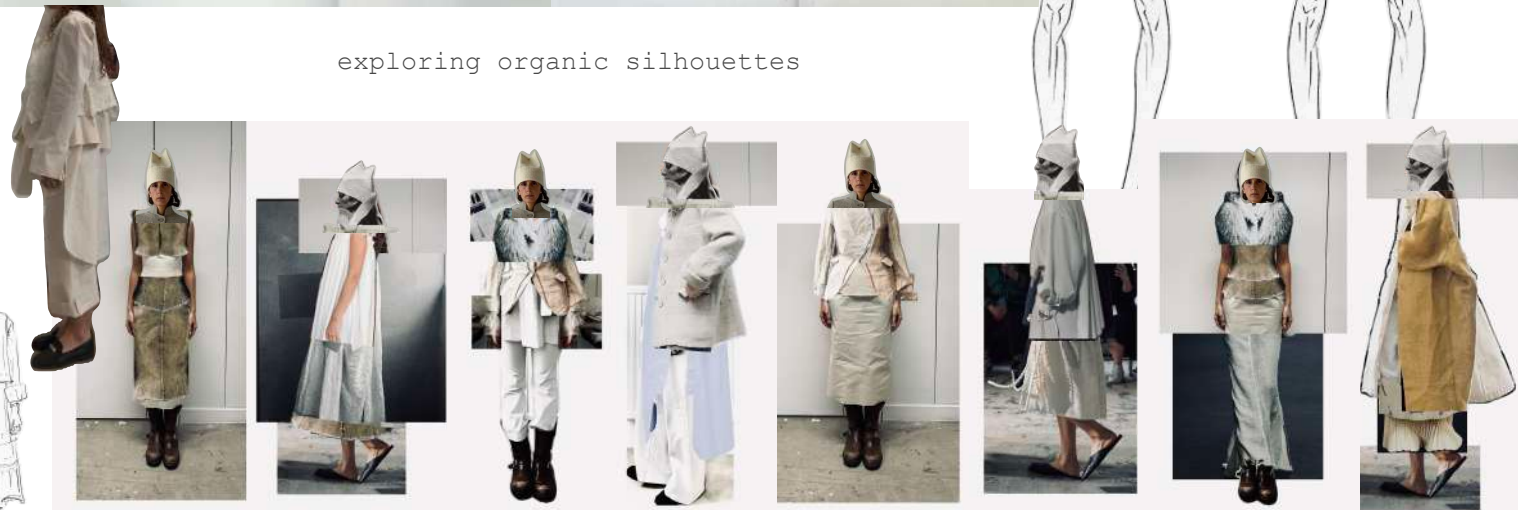
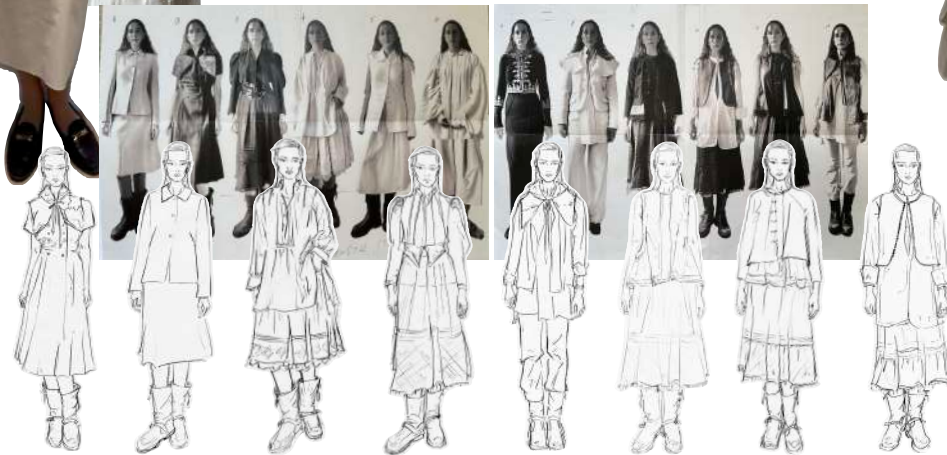


collaging with garments that are most worn in my wardrobe -

|short jacket|waistcoat|straight leg trouser|wider loose trouser|vintage shirts (smocks & blouses)|long skirt/dress|



exploring organic silhouettes



oversized / more inclusive

1



2



3



4



5



6



7

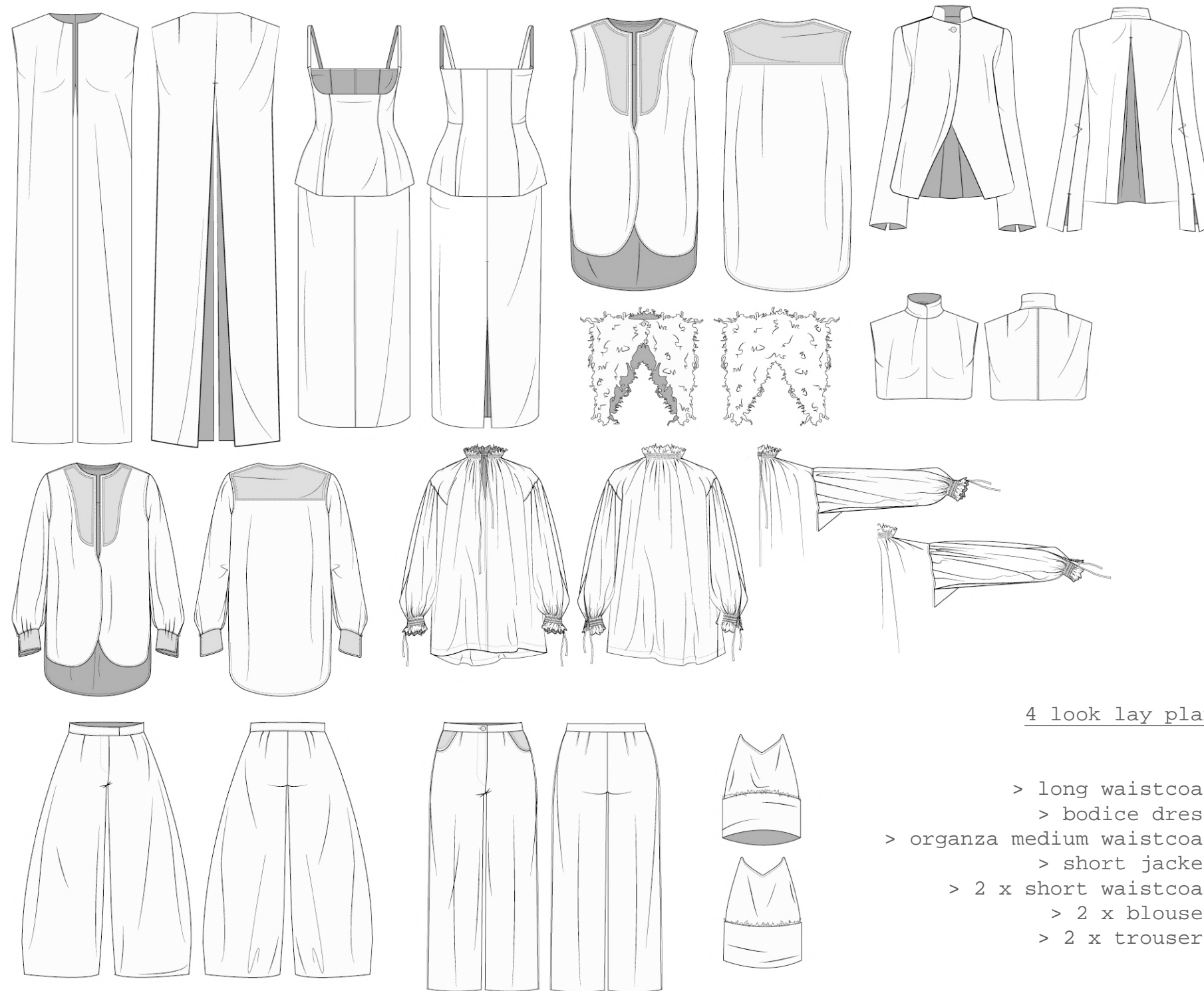


8



4 x looks chosen for development into final fabric





4 look lay plan

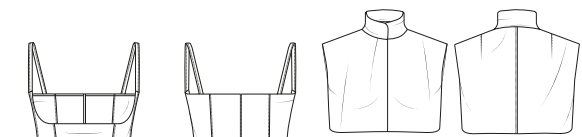
- > long waistcoat
- > bodice dress
- > organza medium waistcoat
- > short jacket
- > 2 x short waistcoat
- > 2 x blouses
- > 2 x trousers



original armée stamp - saving it's history



- no lining - inside finished as perfect as outside
- > reduced fabric waste
- > adaptable layering for underneath
- > hand-stitched button holes with organic cotton thread
- > hand-made wooden button



hand-bound with deadstock french linen



hand- tacked skirt to bodice - reducing

A blank, aged, cream-colored page with a metal clip at the top, showing the texture of the paper and the binding edge on the right.



all garment labels are
- with
garment bags are m
displayed o

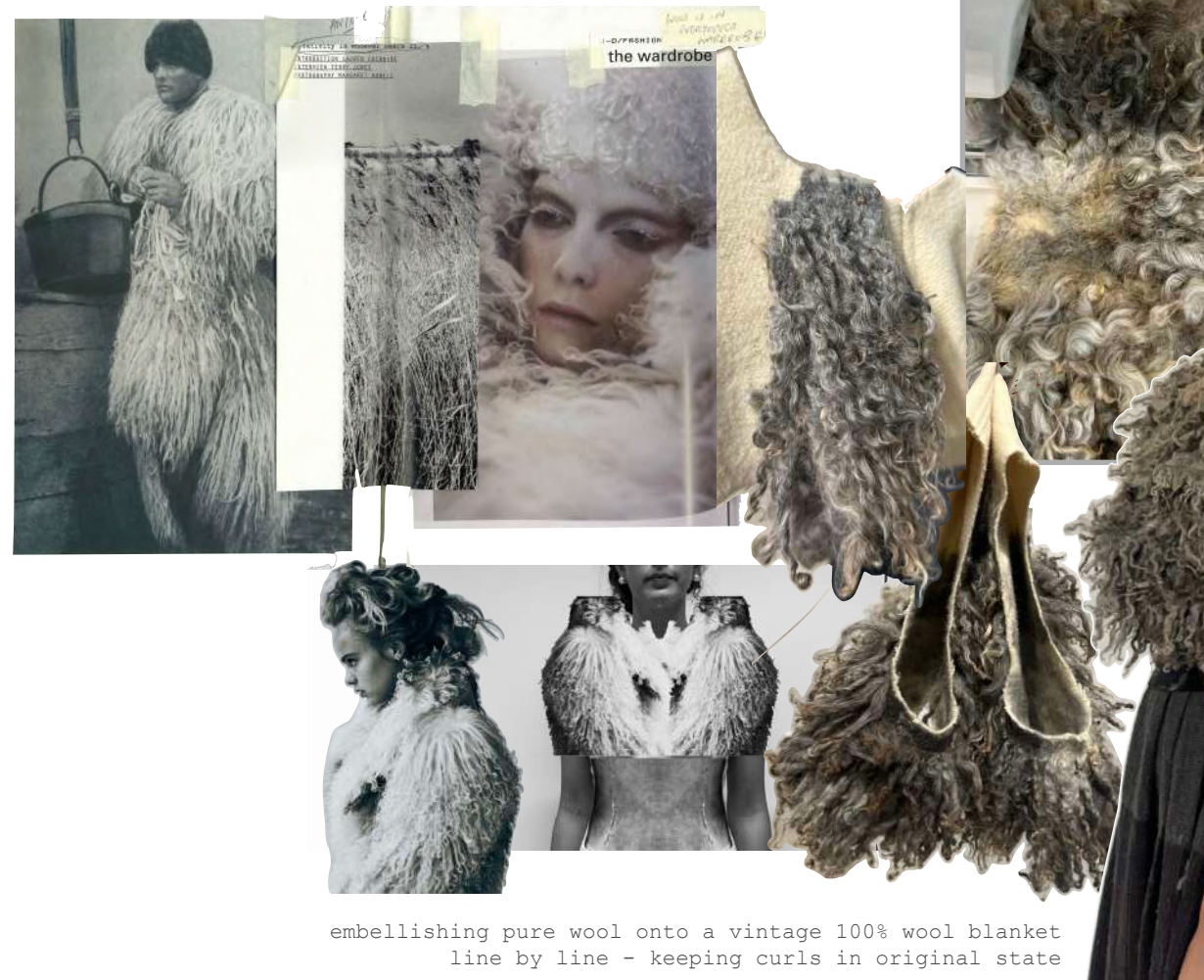
@STUDIOSISMANOVIC
ALICESISMANOVIC@HOTMAIL.CO.UK

VOLUME I - OMNIBENEVOLENT | ALICE ŠIŠMANOVIĆ

local no skin sheep-skin!



the Dartmoor Shepherd wool clippings that had no use >



3 traditional breeds of Longwool sheep native to Devon; The Greyface Dartmoor, The Whiteface Dartmoor and the Devon and Cornwall Longwool



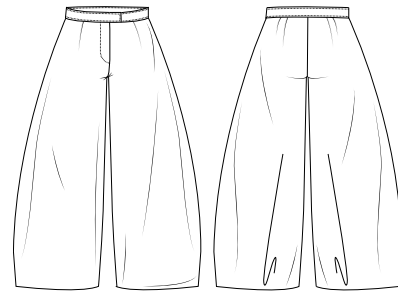
mulberry
silk
blouse

embellishing pure wool onto a vintage 100% wool blanket
line by line - keeping curls in original state

|vintage grain-sack from a french antique market|

a new life

beautiful weight and quality
- hemp



patched holes - add character and allows for a second life



full cow-hide draped skirt
- fastened with leather
lace

0 waste and otherwise put
in landfill

mulberry (Kozo Tree) bark waistcoat

bark from a mulberry silk tree used to feed
silk worms and produce raw silk fabric

made with strands of natural bark fibre



