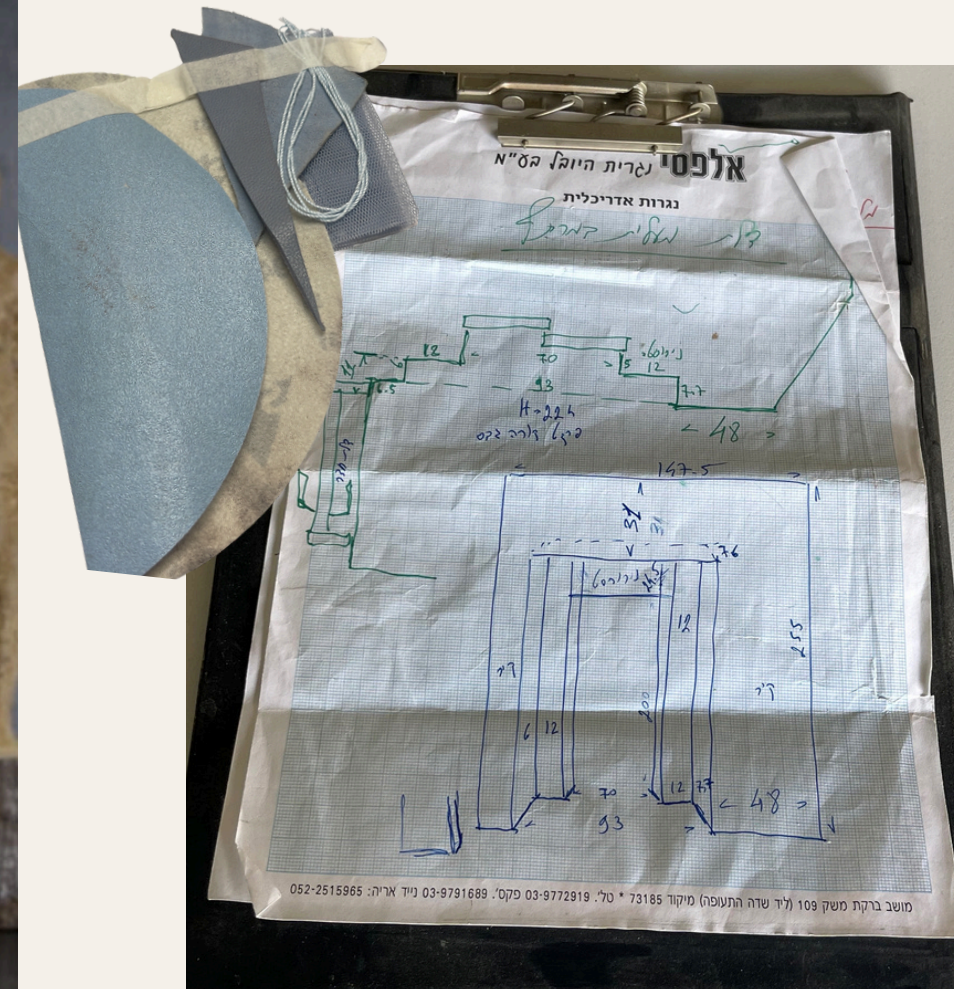
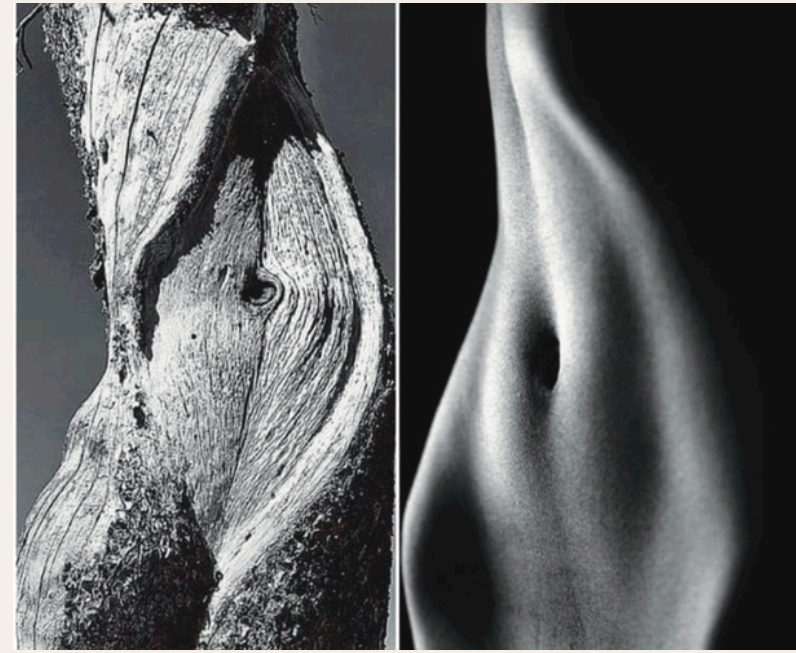
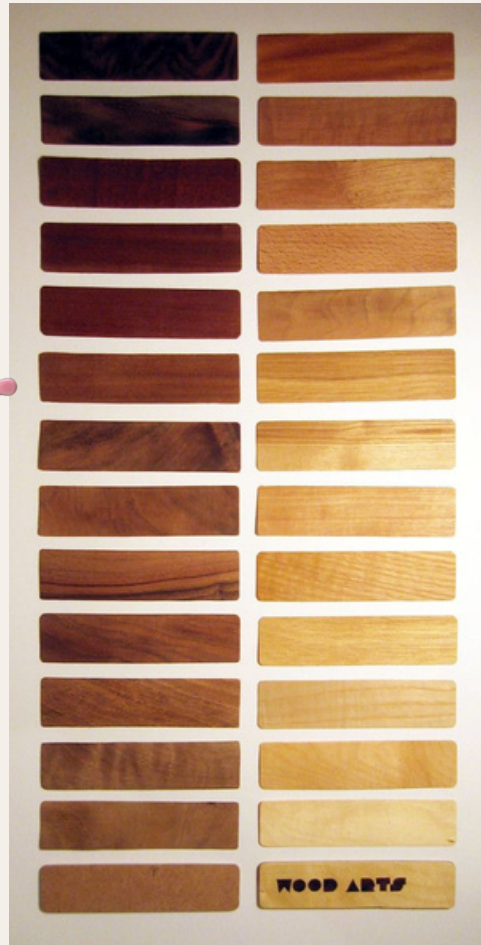


TOUCH WOOD// MOR ELFASSY



MOOD BOARD





NICE TO MEET YOU! MY NAME IS MOR AND MY FINAL PROJECT DRAWS INSPIRATION FROM A DEEPLY PERSONAL AND FAMILIAR PLACE: MY FATHER'S CARPENTRY WORKSHOP. AS ONE OF FOUR DAUGHTERS BORN TO A CARPENTER, THE QUESTION OF LEGACY AND INHERITANCE HAS ALWAYS LINGERED IN THE BACKGROUND- WHO WILL CARRY ON THE TRADITIONAL CRAFT?

THIS FIELD, HISTORICALLY ASSOCIATED WITH MASCULINITY AND MANUAL LABOR, OFTEN SEEMS DISTANT FROM FEMININE PRESENCE.

YET, WITHIN MY FATHER'S WORKSHOP, THERE ARE SUBTLE TRACES OF SOFTNESS AND FEMININITY: A GLASS WINDOW ADORNED WITH FLOWERS, FLORAL WOOL BLANKETS USED TO PROTECT AND TRANSPORT FURNITURE, AND MORE.



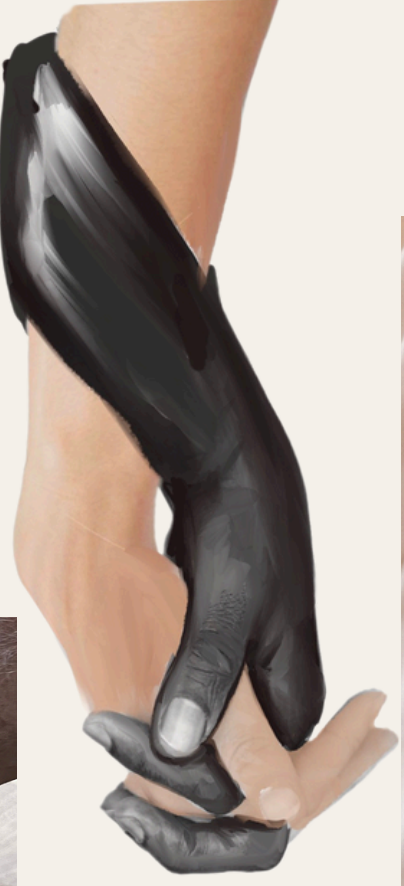
ME AS A CHILD



"THE LITTLE FRUITSELLER",
BARTOLOMÉ ESTEBAN MURILLO
(A COPY OF THE WORK IS PLACED IN
MY FATHER'S CARPENTRY)



THE WISH TO GRASP MY FATHER'S HAND-NOT TO FOLLOW IN HIS EXACT FOOTSTEPS, BUT TO WALK ALONGSIDE HIS LEGACY IN MY OWN WAY.



WOODEN BRACELET CARVING



PROCESS

CRAFTING A HAND-SHAPED MOLD BASED ON MY FATHER'S HAND



CONCRETE MODEL OF MY FATHER'S HAND



COLOR SELECTION



MY FATHER AS A CHILD



THE CENTRAL CONCEPT THAT GUIDED ME IS **"METAMORPHOSIS"**-A PROCESS OF TRANSFORMATION IN WHICH MATERIALS, OBJECTS, AND MEANINGS SHIFT, REFLECTING A DEEP CONNECTION BETWEEN THE HUMAN BODY AND MATTER. ALONGSIDE TRANSFORMATION, I EXPLORE THE IDEA OF **CONTINUITY**, EXAMINING THE DESIRE TO PRESERVE FAMILIAR, CLASSICAL SILHOUETTES WHILE SIMULTANEOUSLY PUSHING BEYOND THEIR BOUNDARIES. BY EXTENDING LINES AND ALTERING THE CONTEXT OF EXISTING GARMENTS OR DETAILS, I AIM TO REINTERPRET THEIR MEANING AND GIVE THEM A RENEWED SIGNIFICANCE.



EXPLORING BOUNDARIES AND CONTINUITY — TROUSERS THAT EXTEND AND TRANSFORM INTO A SCARF. THIS TRANSITION IS ALSO MATERIAL: FROM SOFT WOOL TO RIGID, KNITTED LEATHER.

A COOKIE BOX TRANSFORMED INTO A STORAGE CONTAINER



Leather textile manipulation

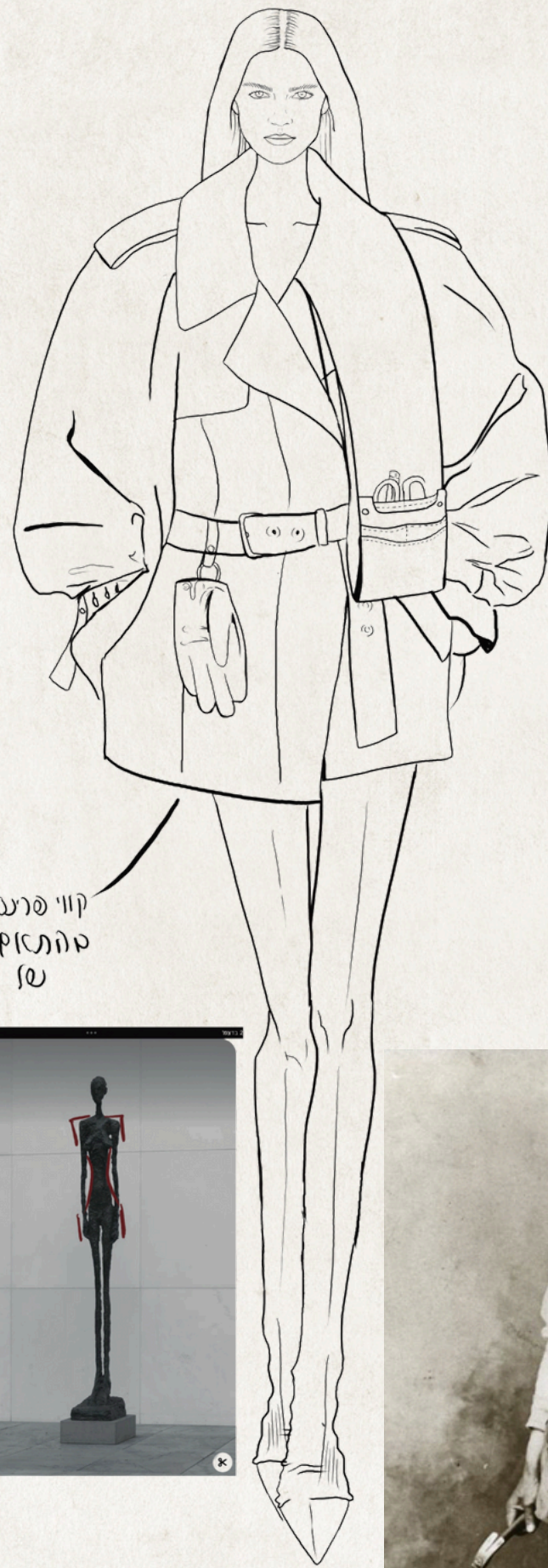
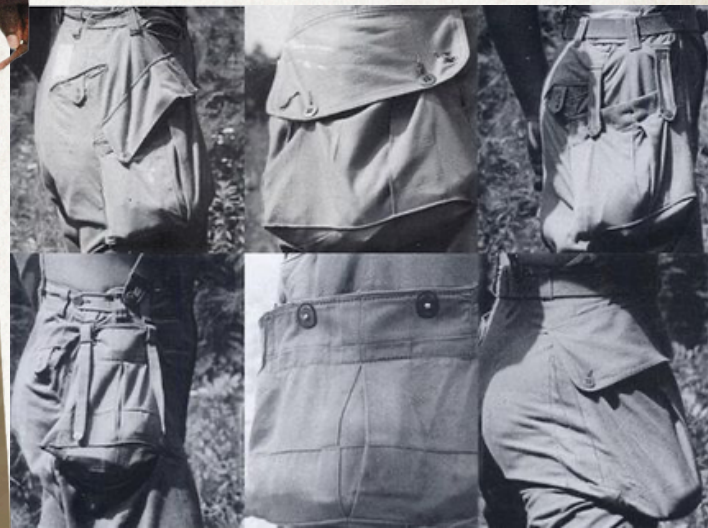


THE IDEA OF CONTINUITY, EXPRESSED THROUGH A COLLAR THAT TRANSFORMS INTO A WORK POCKET.

A TEXTILE DEVELOPMENT INTEGRATING SOFT WOOL THAT GRADUALLY TRANSFORMS INTO STIFF LEATHER, EMPHASIZING THE CONTRAST BETWEEN SOFTNESS AND STRENGTH.



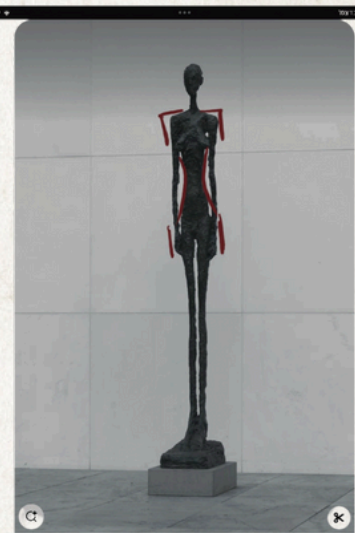
WOOL FABRICS



קווי פרנס/התכין
 סהתפיק אקווי האתאר
 של חפץ השי

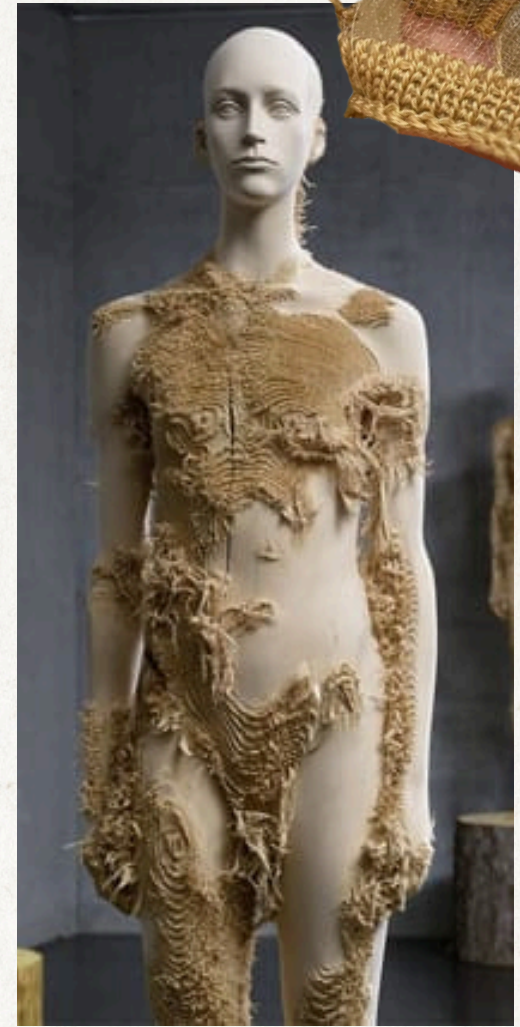


מיקום
 הולך
 אביס
 נער



ARON DEMETZ, INTERNATIONALLY ACCLAIMED SCULPTOR, EXPLORES THE DEEP CONNECTION BETWEEN THE HUMAN FORM AND WOOD, USING CARVING AND SURFACE TREATMENTS TO EXPRESS THEMES OF VULNERABILITY, HEALING, AND TRANSFORMATION. HIS WORKS TURN WOOD INTO A METAPHOR FOR THE BODY, INVITING REFLECTION ON OUR RELATIONSHIP WITH NATURE.

ARON DEMETZ EXPLORES THE CONTRAST BETWEEN STRENGTH AND FRAGILITY THROUGH WOOD, A MATERIAL HE SOFTENS AND SCARS TO REVEAL EMOTIONAL DEPTH. FOR ME, WOOD REFLECTS THIS DUALITY: IT EMBODIES MY FATHER'S TOUGHNESS, WHILE ALSO MIRRORING MY OWN SOFTNESS AND VULNERABILITY.



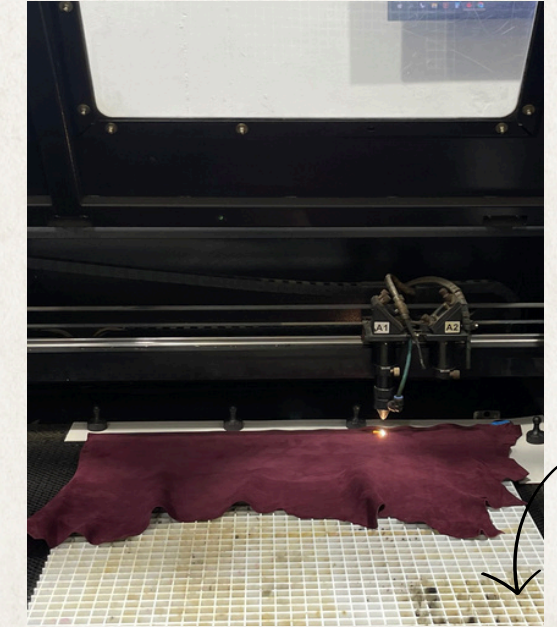
A textile innovation combining knitting techniques with embedded sawdust



TEXTILE MANIPULATION OF LEATHER - USING KNITTING-WEAVING TECHNIQUE



1) LASER CUTTING



2) LEATHER'S KNITTING-WEAVING



CREATING PROMINENT AREAS OF THE BODY THROUGH LAYERED FRINGES, IN ORDER TO EMPHASIZE THE TENSION BETWEEN CONCEALMENT AND EXPOSURE, SOFTNESS AND RIGIDITY, PROTECTION AND FRAGILITY.



ACCESSORIES//

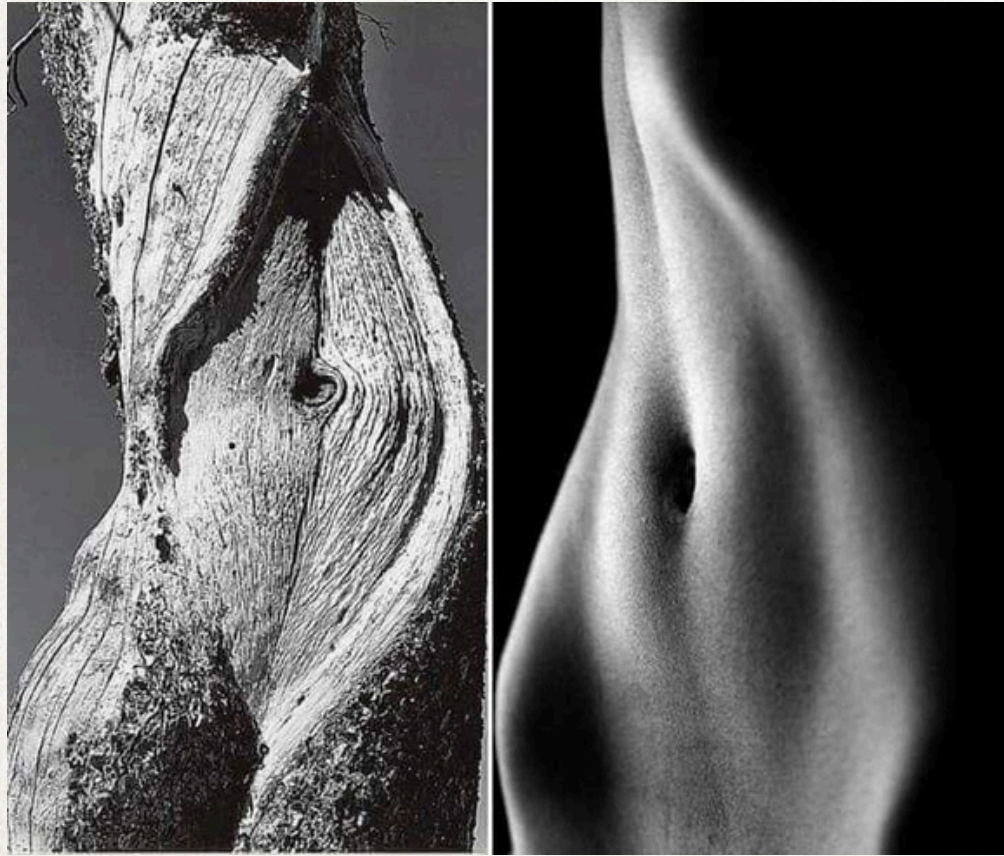


MY COLLECTION//

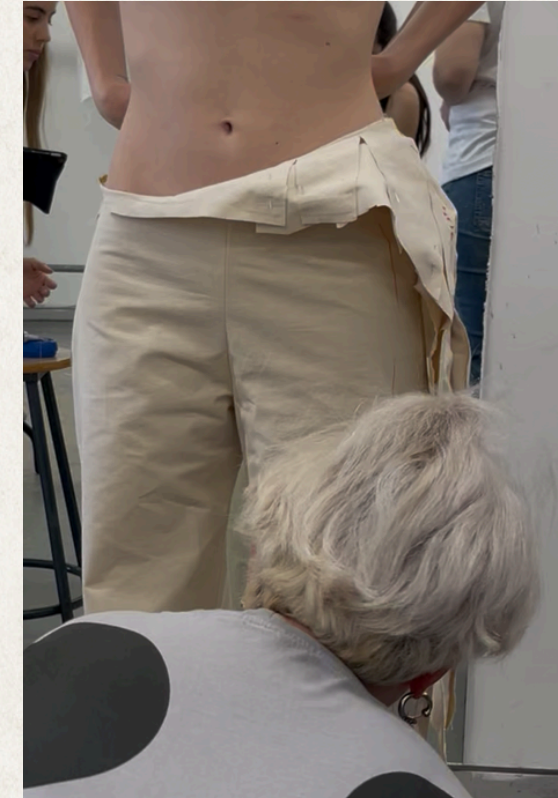


WORK PROCESS//

A VISUAL RESEMBLANCE BETWEEN THE TEXTURE OF THE TREE TRUNK AND THE CURVES OF THE HUMAN BODY. THIS IMAGE HIGHLIGHTS THE SIMILARITY BETWEEN NATURE AND THE BODY, BETWEEN HARDNESS AND SOFTNESS.



A DESIRE TO BREAK BOUNDARIES—AMORPHOUS LINES EMERGING FROM CLASSIC, FAMILIAR SILHOUETTES.



Leather textile manipulation



WORK PROCESS//

THE FLORAL STAINED-GLASS WINDOW IN MY FATHER'S CARPENTRY WORKSHOP SYMBOLIZES THE TENSION BETWEEN SOFTNESS AND STRENGTH.

I EXPLORE THIS CONTRAST BY SCULPTING WOOD-TRADITIONALLY RIGID-INTO DELICATE, INTIMATE FORMS USING BRAS AND LACE, EVOKING VULNERABILITY AND TENDERNESS.

