



My journey merging  
nature and streetwear

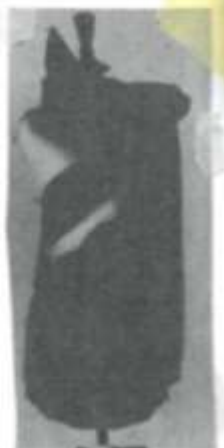
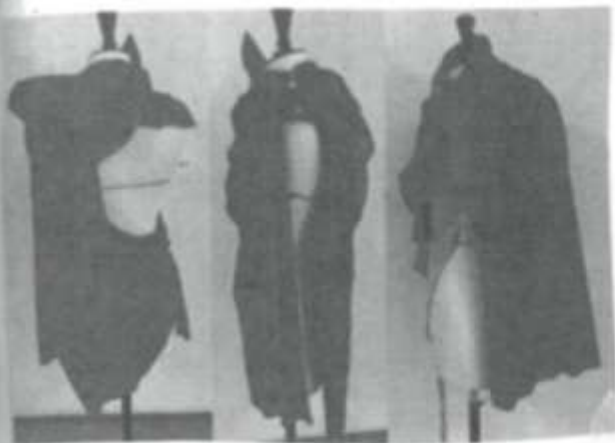


'ALFAUATU '23



- A COLLECTION MADE -  
OF 100% NATURAL  
MATERIALS





ARCHER  
BACK

USING GARMENTS  
TO MAKE NEW  
SILHOETTES

- LOOKING FOR FORMS





FINDING A WAY FOR BOT STREETWEAR  
AND NATURE TO BELONG ON ONE SILHOUETTE  
-NATURE IS OVERPOWERING IN THESE SKETCHES



USED DOUBLE PLÖTULOPI FOR A MEDIUM THICKNESS

**Plötulopi.**  
 LOPI. Öppunin er mjúk og lifur  
 Unpun wool, soft and airy

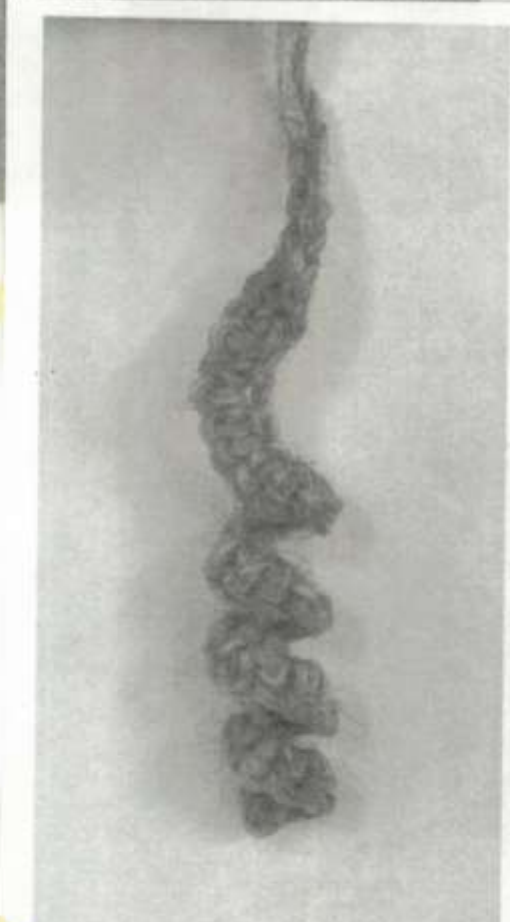
Frakkli er teygjufull  
 Made from Icelandic wool  
 BTEX, Iceland  
 www.lopi.is

OEKO TEX  
 STANDARD 100  
 www.oeko-tex.com

100% Ull / Wool  
 100 g - 300 m  
 3.5 oz - 328 yd

PURE NEW WOOL  
 KIRKLAND SIGNATURE  
 FINEST Wools

Washing instructions: Machine washable, do not bleach, do not iron, do not dry clean.



WITHOUT HAVING BEEN COMBED



COMBED FOR RELAXED TEXTURE





- BEHIND THE SCENES









OPEN CUT ON THE  
FABRIC FOR THE  
PARKA. LAYERS LIKE  
A SANDWICH.



BEFORE BEING  
COMBED AND  
FELTED  
TOGETHER









PULL OUT →  
FOR A FULL  
VIEW OF THE  
COLLECTION

