

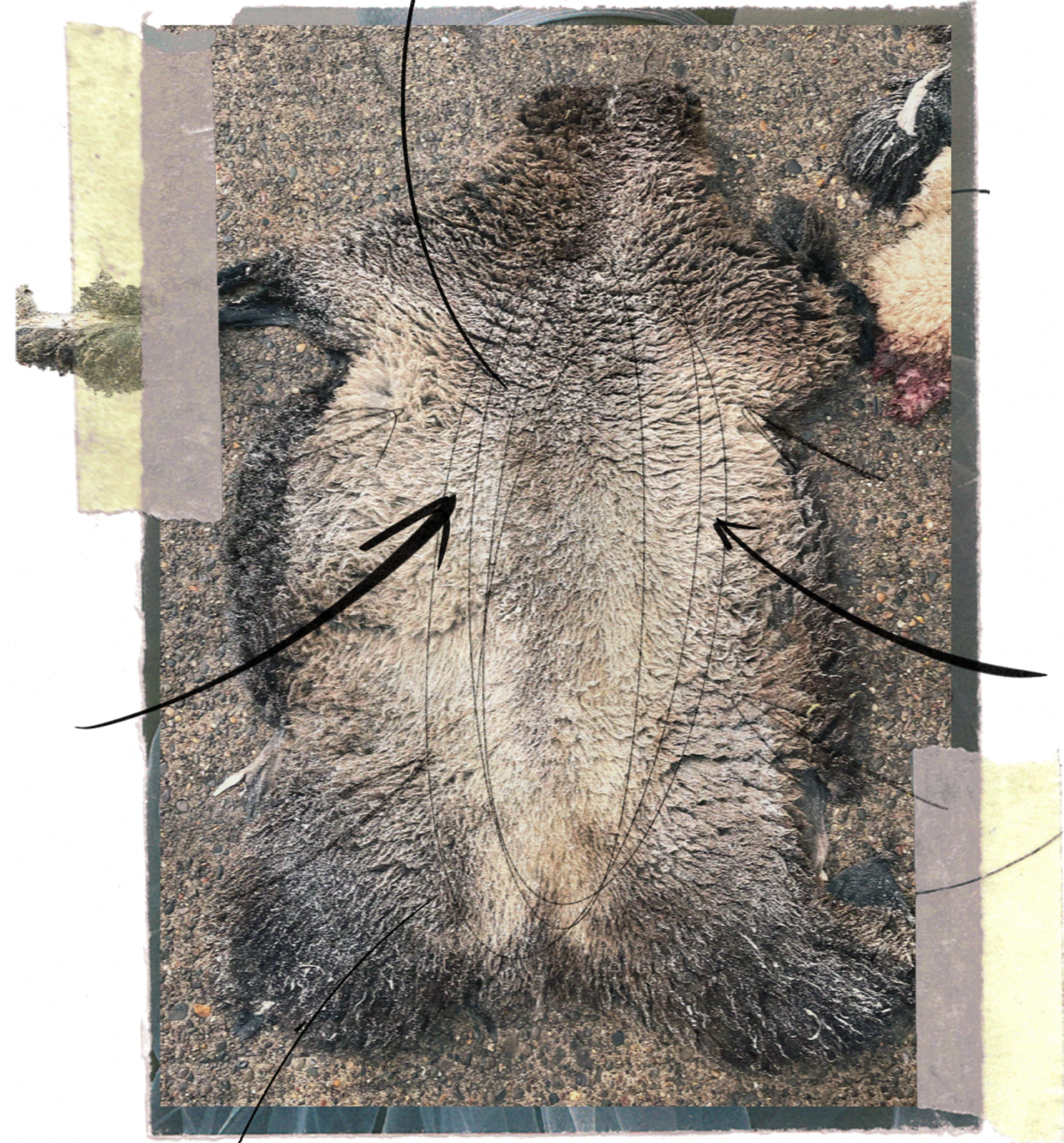


**M O L L Y
K A T H R Y N**

**@ M O L L Y K A T H R Y N _ L O N D O N
M O L L Y K A T H R Y N S T U D I O @ G M A I L . C O M**



Making at point 2/10



Trace of Animal Body

Jam Jolley
Jasanti



B-Padd
Shoulder

Shearing of Sheep



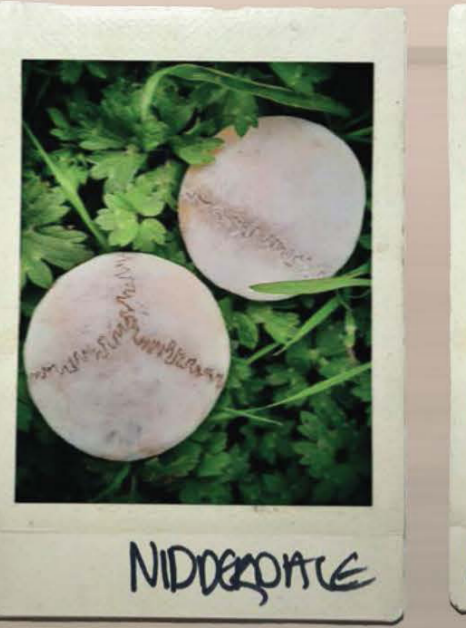
The look maximises the use of fully traceable animal hides that originate from regenerative farming and can be traced back to the animal.

This design is an extension of my AWW24 graduate collection, which exploring the rewilding of fashion and building a system that could be rooted in community and regenerative practices.

100% Loughran Coat



Start



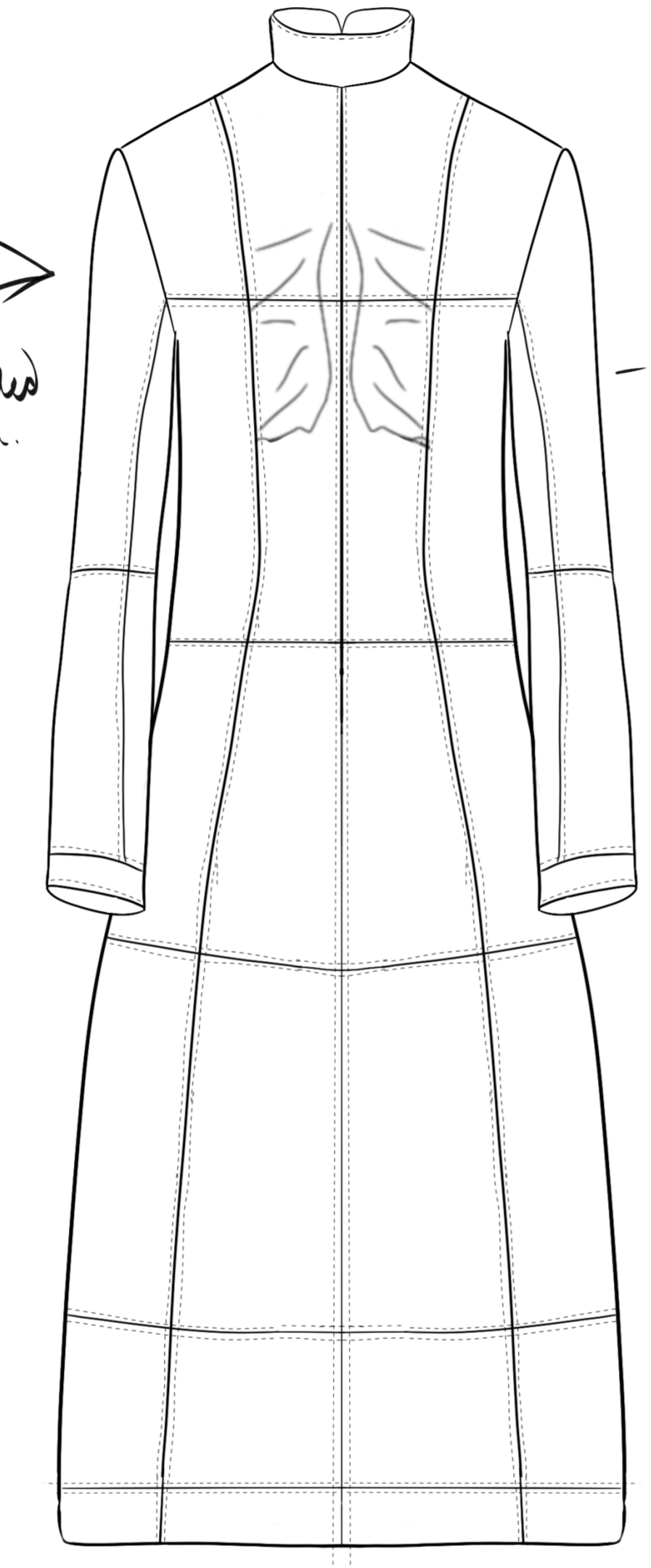
NIDORPITE



10M ABBATON 07/09



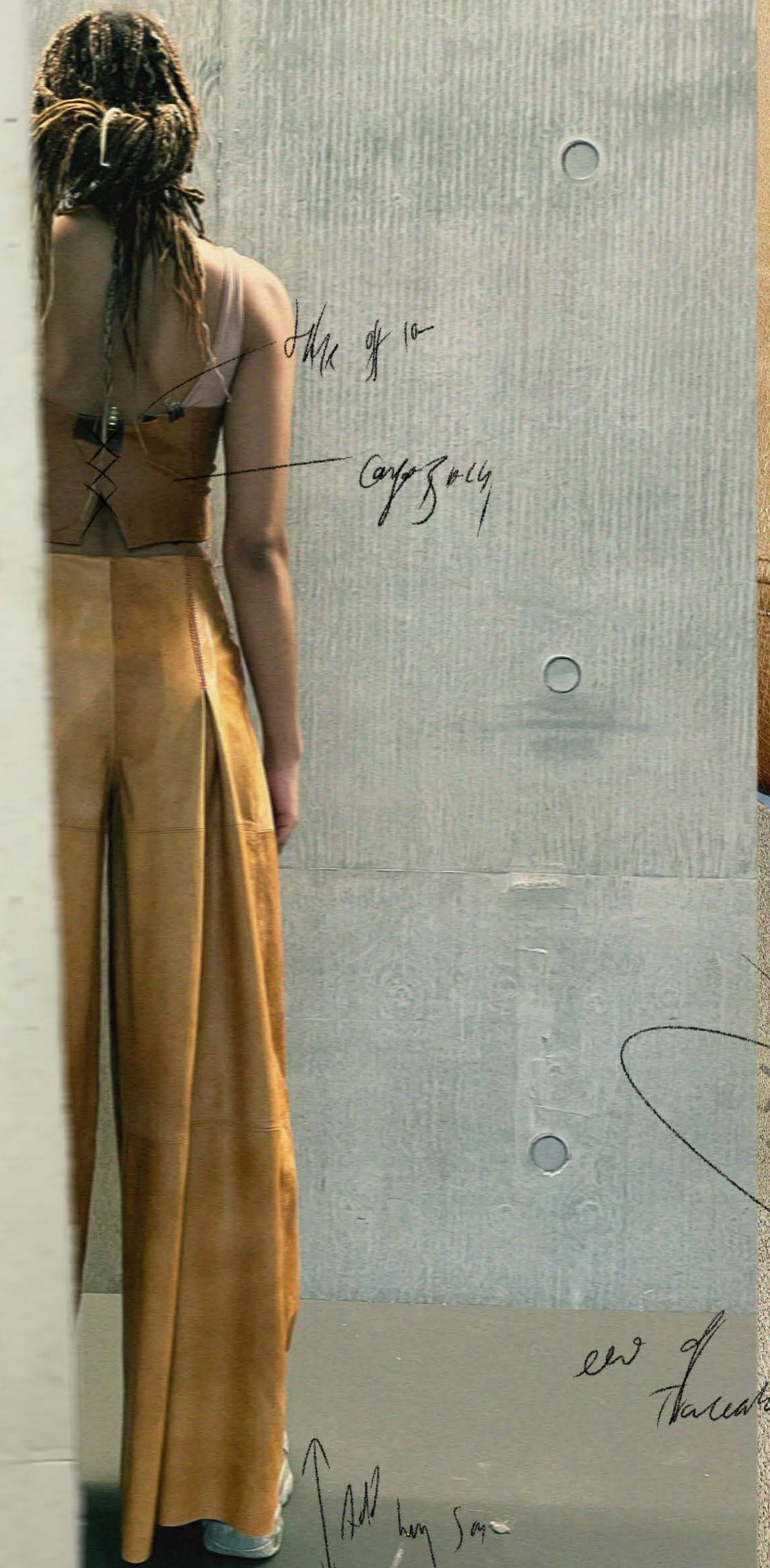
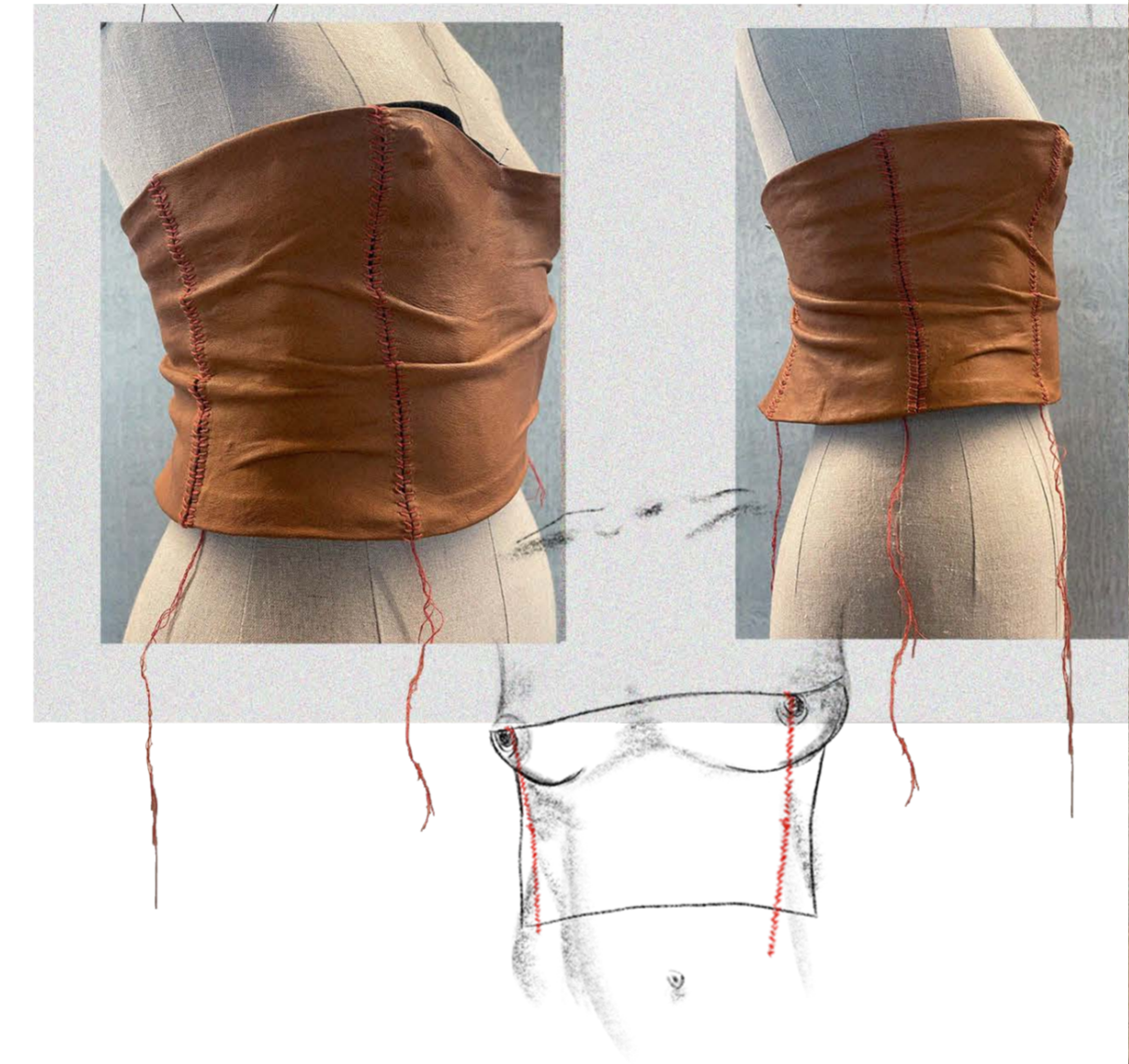
Spine panelled
in back.



- Opening at waist

The back of the jacket features a spine intricately moulded into the panelling on the back, paying homage to the origins of organic leather it's beauty when sculpted around the body.

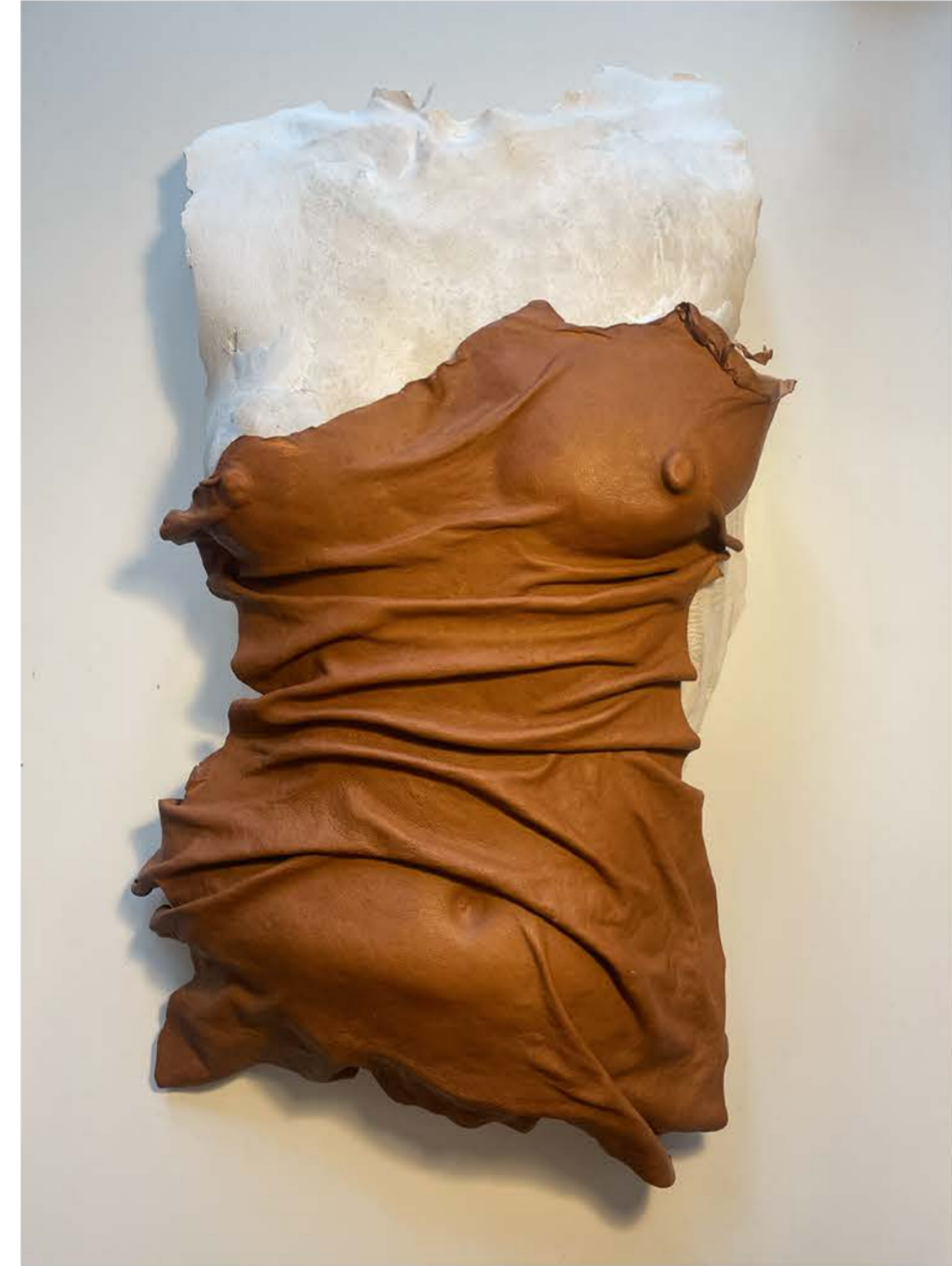
The look would be paired with my AW24 moulded bustier, which is hand stitched then wet moulded to the body.



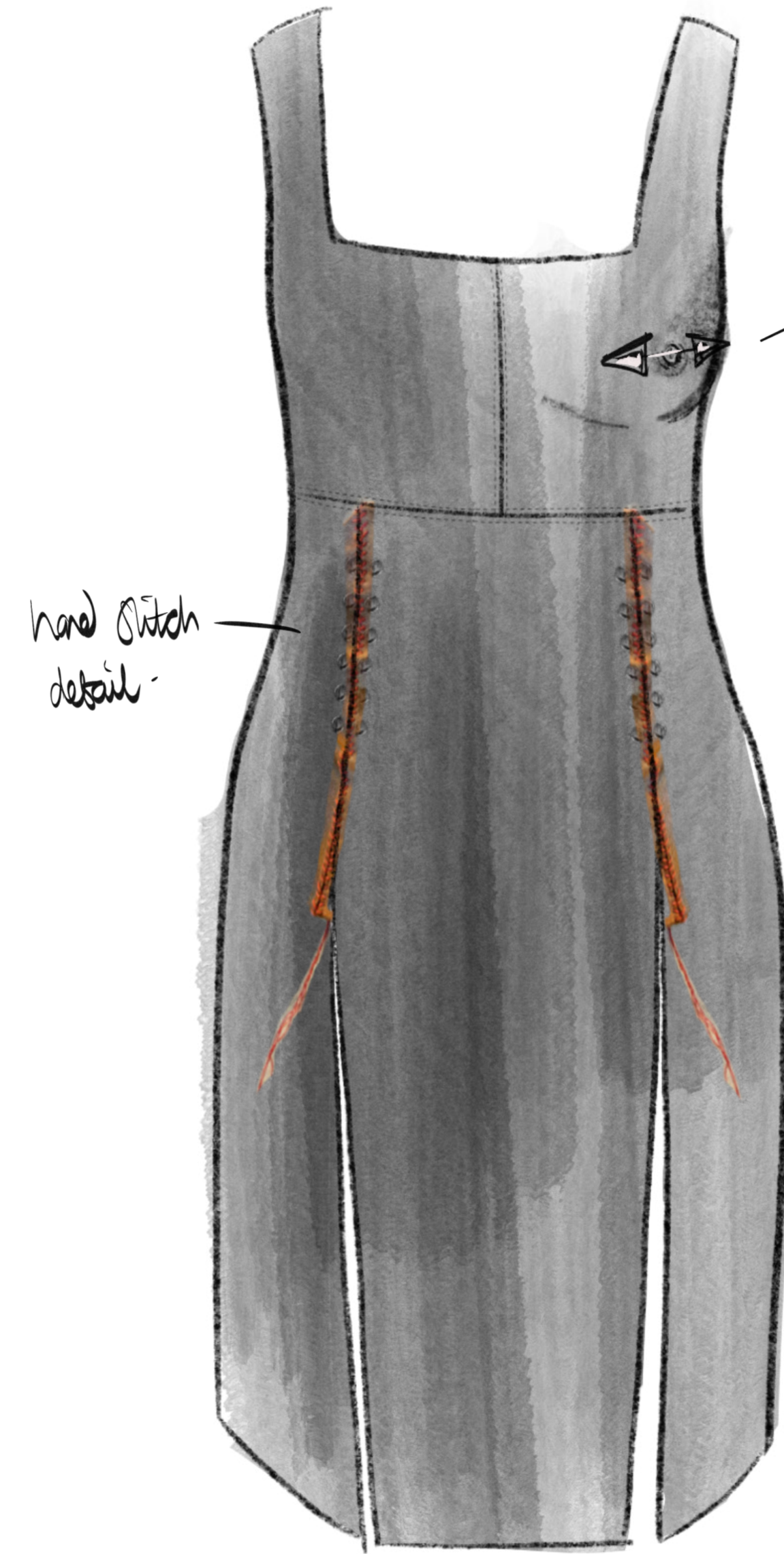
FINAL FITTING 8/19

ADD hem 5cm

end of threaded journey



Wet Moulded developments.



hand stitch detail -

jewellery detail

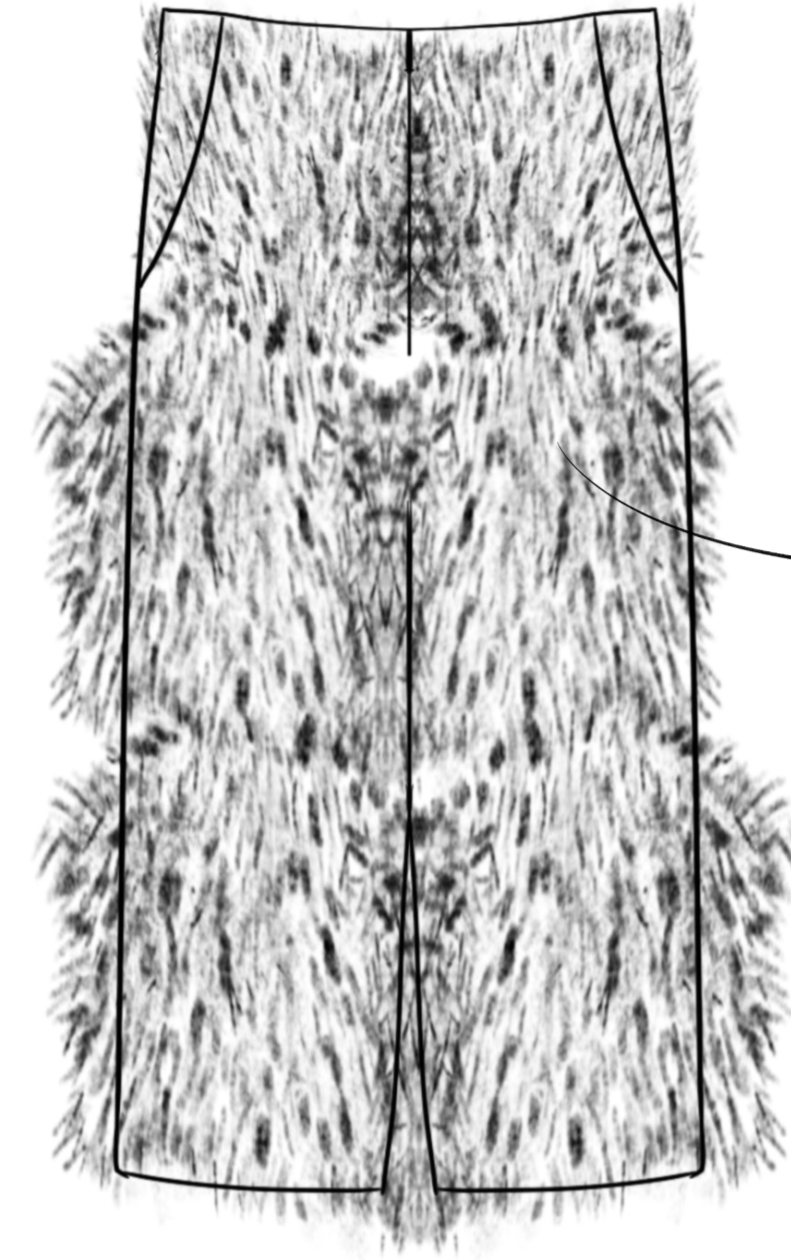
A black panelled apron dress, using the same finishing techniques, completes the look. Once panelled, I will wet mould the breast form into the bodice and canvas line it for stability, creating a sculpted dress that delicately follows the form.

Wet Moulded and Canvased



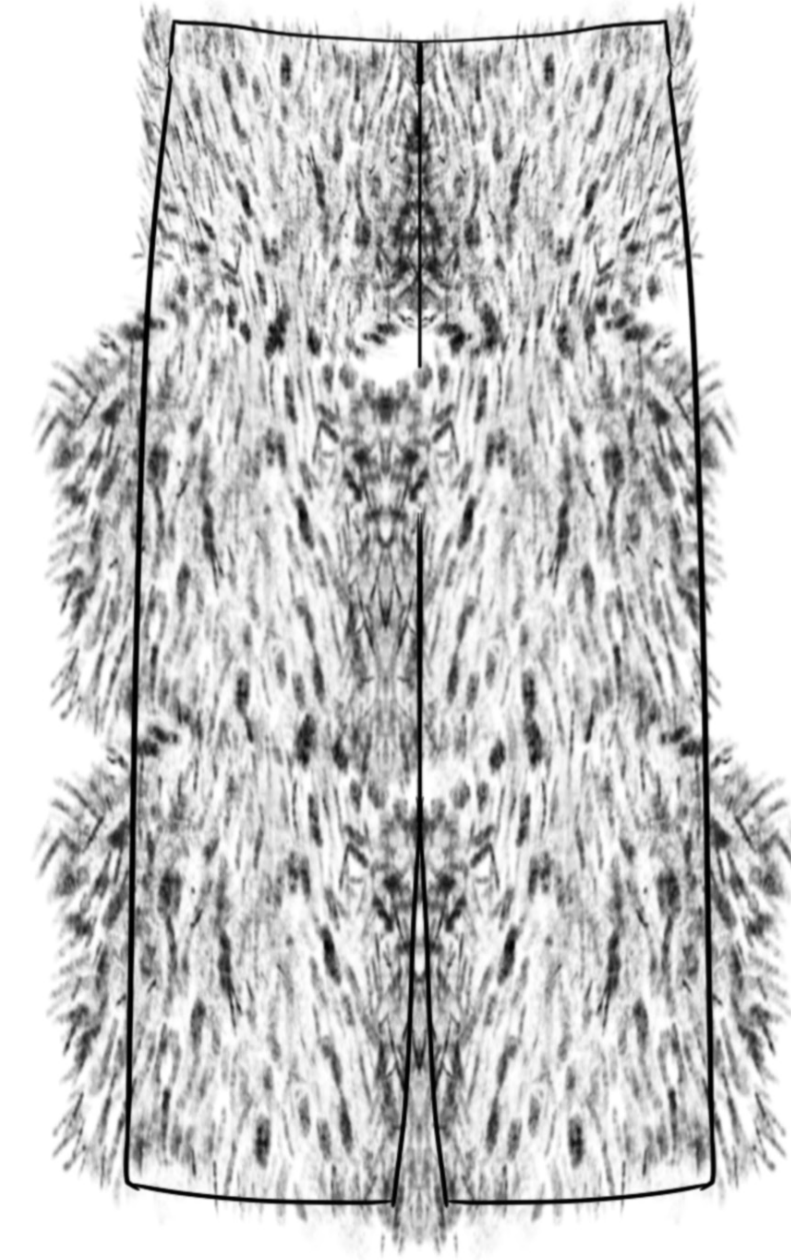
An Iteration of my AW24 Shearling Trouser, the trousers i am proposing to create are a drop waist tailored short using norwegian sheep hide from Ulu of Norway. It's supple hide and flexibility make it comfortable to wear and will help keep the body cool.

I will use tradition construction to keep the finsihings as minimal as possible and let the incredible staple take centre stage.



gusset at crotch for comfort

below the knee.



ulu of Norway hides.

