

**ONLY
NATURAL**



DAFFODIL DAYS



PROJECT SUMMERY

FOR THIS PROJECT, I WANT TO COMBINE NATURAL FABRICS AND ADAPTIVE FASHION TO CREATE A BLEND OF WEARABLE PIECES THAT ARE RESPONSIBLY SOURCED AND INSPIRED BY DAFFODILS. ADAPTIVE FASHION IS SUCH AN IMPORTANT CAUSE THAT IS IGNORED BY THE FASHION INDUSTRY. MUCH LIKE RESPONSIBLE FASHION HAS BEEN OVERLOOKED, BRINGING TOGETHER THESE TWO CAUSES PROMOTES A HEALTHIER AND MORE INCLUSIVE FASHION INDUSTRY. NATURAL FIBRES AND FABRICS ARE THOUGHT TO BE THE MOST BENEFICIAL FABRICS TO PEOPLE WITH DISABILITY FOR THEIR SENSORY, FRIENDLY TEXTURES, AND THEY ARE ALTOGETHER BETTER FOR BODY TEMPERATURE REGULATION. USING THESE DIFFERENT PARTS OF INSPIRATION, I WANT TO CREATE SOMETHING BRIGHT AND CHEERFUL, LIKE LOOKING AT A YELLOW FLOWER.





Daffodil petals emerging from the spathe



BEST FABRICS FOR ADAPTIVE CLOTHING



WHEN THE CORRECT FABRIC ARE
USED THEN IT MEANS THAT THE
ENERGY OF WORRY ABOUT
CLOTHING CAN BE PRESERVED AND
TURNED INTO SOMETHING MORE
USEFUL

" THE BEST CLOTHES
FOR PEOPLE WITH
SENSITIVITIES ARE MADE
WITH NATURAL FABRICS,
WHICH INCLUDE
COTTON, LINEN, AND
BAMBOO." - JUNE
ADAPTIVE





MEDICINAL CLOTHING AND FABRICS - (AYURVASTRA APPAREL)

This way of healing for the body use oils and dyes. It helps create balance, in the body which then makes you less susceptible to illness

This fabric is made using hand-foraged natural fibres and completely natural herbs. The fabric then can be used as a healing tool for the body and help to promote personal wellness. The fabrics are also processed in herbs and certain types of doctors use these fabrics for medical healing



Ayurveda is a branch of Ayurveda, the ancient 5,000 year old Indian system of Vedic healthcare.





iNiTAL
iDEAS



"WHEN YOU LIVE WITH A DISABILITY OR BODY DIFFERENCE, SMALL DAILY TASKS CAN BECOME DIFFICULT OR EVEN INSURMOUNTABLE."



- ADAPTIVE CLOTHING RANGES IN ADAPTION FROM
- MAGNETIC CLOSURES
 - SPECIALLY DESIGN CLOTHING FOR SEATED STATURE
 - CLOTHING WITH EASY ACCES TO CERTAIN AREAS
 - TAGLESS CLOTHING
 - COMPRESSION
 - REINFORCED AREAS

CLOTHING ADAPTIONS FOR DYNAMIC DISABILITIES

DAFFODILS ON THE BODY



HOW TO MAKE CLOTHING MORE COMFORTABLE AND ADAPTIVE FROM JUNE ADAPTIVE.



<https://www.juneadaptive.com/blogs/our-community/adaptive-clothing-15-innovative-ideas-to-enhance-comfort>

1. Using stretch and breathable fabric.
2. Use fasteners which are easy to use which give space and dexterity
3. Use adjustable straps and ties
4. Use larger pulls and helpful zippers
5. Use slight padding and hidden pockets
6. Easy to care for fabrics
7. Use stretchable fabrics
8. Use wider arm holes and necklines
9. More draping for moveability
10. Create adaptive sizing

USING CLO-3D FOR DISABLED DESIGN

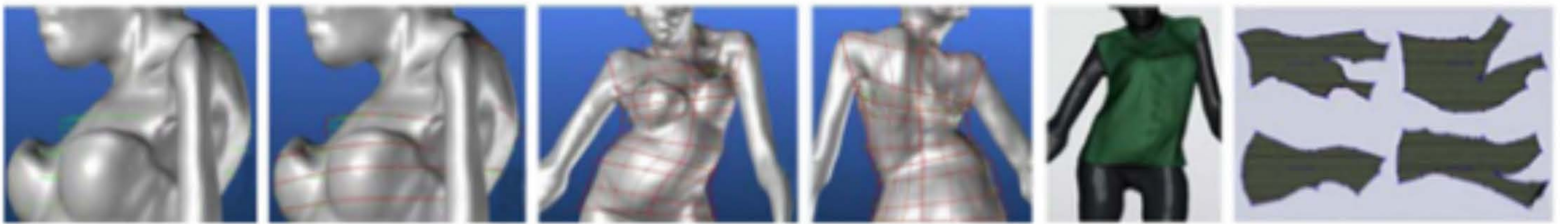


Fig. 2. Generation of 3D virtual garment (Hong et al., 2017).

CLO 3DC HAS BEEN USED ALONG SIDE MAPPING TECHNOLOGY TO CREATE EXACT BODY PANNELS FOR

SCOLIOSIS

"A FEW RESEARCHERS
HAVE USED BODY SCANNING
AND 3D SIMULATION
TO CREATE APPAREL FOR
INDIVIDUALS
WITH MOBILITY
IMPAIRMENTS
AND ATYPICAL
MORPHOLOGIES".





"NATURAL FIBERS ARE ONE OF THE MOST RELIABLE SOURCES OF SENSORY-FRIENDLY FABRICS."

A LOT OF THE TIME PEOPLE WHO HAVE CERTAIN DISABILITY HAVE THE TENDENCY TO FIND ONE FABRIC WHICH THEY LIKE AND CAN'T MISS DIFFERENT FABRICS ON THEIR BODY. SO THEY KEEP IT CONSISTENT



WITH SOME DISABILITIES, PEOPLE CAN STRUGGLE WITH FABRICS TOUCHING THEIR SKIN. THIS CAN BE AN ISSUE BECAUSE IF A PERSON DOES NOT FEEL COMFORTABLE IN THEIR CLOTHES, IT CAN INCREASE SYMPTOMS AND PLAY A MASSIVE PART IN THEIR WELLBEING.

SENSORY-FRIENDLY
FABRICS.

WHAT DO
DAFFODILS
REPRESENT?



MAKING AN ACCESSIBLE BODICE

THIS WAS ONE OF MY FAVOURITE EXPERIMENTS I HAVE DONE. I STARTED OFF BY CUTTING OUT A BASIC BODICE FROM A 38 INCH MEN'S BLOCK AND THEN SEWING IT TOGETHER AND TAKING IT APART EACH TIME I FOUND A PROBLEM. SO I INSERTED TWO ZIPS ON THE SIDES AND CHANGED THE SEAMS AND ADDED VELCRO TO THE SHOULDERS SO IT WAS ALL FULLY ACCESSIBLE BASED ON A PERSON'S NEEDS WITHOUT COMPROMISING THE STYLE OR LOOK OF THE BODICE.





**DEVELOPED
IDEAS**

A person wearing a bright yellow tracksuit and yellow sneakers is walking. They are using a yellow crutch in their right hand and holding a small, light-colored teddy bear in their left hand. The background is plain white.

THE IMPRACTICALITIES OF DRESSING AND USING CRUTCHES FULL-TIME CLIENT PERSPECTIVE!

When using walking and mobility aids its really important to think about how you dress. This could be to make sure clothing fits under crutches and make sure nothing is going to make walking dificult. It is known that wearing looser fitting trousers is going to help with your mobility and that wearing loose tops will knock on your crutches and make it harder to walk.

idea BUILDING



PRE EXISTING ADAPTIVE T-SHIRTS



THE ABLE LABEL-
TABATHA COTTON
JERSEY VELCRO®
BRAND FASTENING
TEE £38

- 100% COTTON
- FRONT VELCRO®
BRAND FASTENING
- RAGLAN SLEEVES
- COLOURED TAPE
INSIDE ARMHOLES -
LIME FOR LEFT AND
RED FOR RIGHT



JUNE ADAPTIVE - MEN'S
GRAPHIC T-SHIRT WITH
OPEN BACK £50

ASY OPEN BACK CLOSURE: EFFORTLESSLY SECURED WITH CONVENIENT SNAPS
AT THE SHOULDERS

COMPLETE BACK COVERAGE: ENSURES FULL DIGNITY WITH TWO OVERLAPPING
BACK PANELS

ENHANCED COVERAGE: THE OVERLAPPING PANELS MAINTAIN BETTER
COVERAGE COMPARED TO STANDARD OPEN BACK STYLES

PRESSURE POINT RELIEF: STRATEGICALLY POSITIONED SHOULDER SNAPS
ELIMINATE DISCOMFORT

HASSLE-FREE DRESSING: REDUCES DRESSING TIME AND EFFORT



UNHIDDEN - T-SHIRT
WITH WRAP SLEEVE £35

- INVISIBLE ZIPS IN FRONT RAGLAN SEAMS
- WRAP SLEEVE FOR EASE OF MOVEMENT AND
ACCESS

"GIFTING A
BOUQUET OF
DAFFODILS
IS BELIEVED
TO ENSURE
HAPPINESS
TO THE
RECIPIENT"



FABRIC COLLAGE





SENSORY ISSUES WITH FASTENINGS



WHEN IT COMES TO FASTENING, THERE ARE ADDITIONAL ISSUES. THESE CAN BE WITH ZIPPERS BUTTONS AND TAGS. THESE THINGS CREATE A NEW TEXTURE WHICH IS NOT PREFERABLE TO A WEARER WHO MAY HAVE SENSORY ISSUES.

SIMILAR ISSUES CAN BE FOUND WITH BUTTONS. AS THESE INTRODUCE A NEW TEXT WHICH MAY NOT FASTEN OR SIT IN THE RIGHT PLACE. THE SEWING WHICH IS DONE TO ATTACHED THE BUTTON MAY THEN CREATE AN UNEXPECTED LUMP WHICH MAY SIT IN THE WRONG PLACE FOR A SENSORY FRIENDLY CLOTHING.

THERE ARE INITIAL ISSUES WITH BRANDING AND WASHING INSTRUCTIONS ON CLOTHING. THESE TAGS CAN HAVE COARSE EDGES THAT SIT IN THE WRONG PLACE ON CLOTHING AND CAUSE IRRITATION WHICH IS PROBABLY ENHANCED WHEN YOU FEEL THEM ON YOUR SKIN.



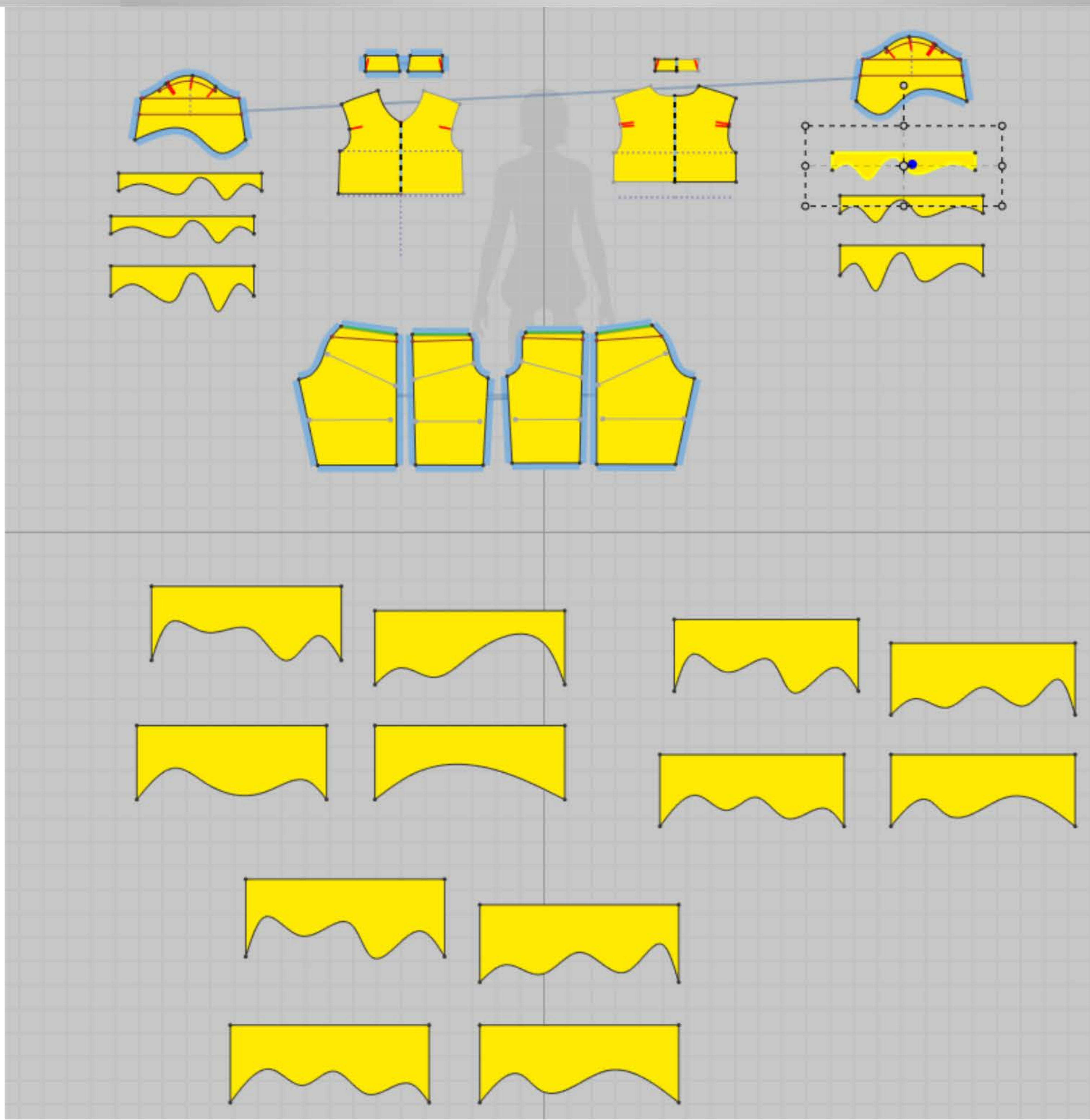


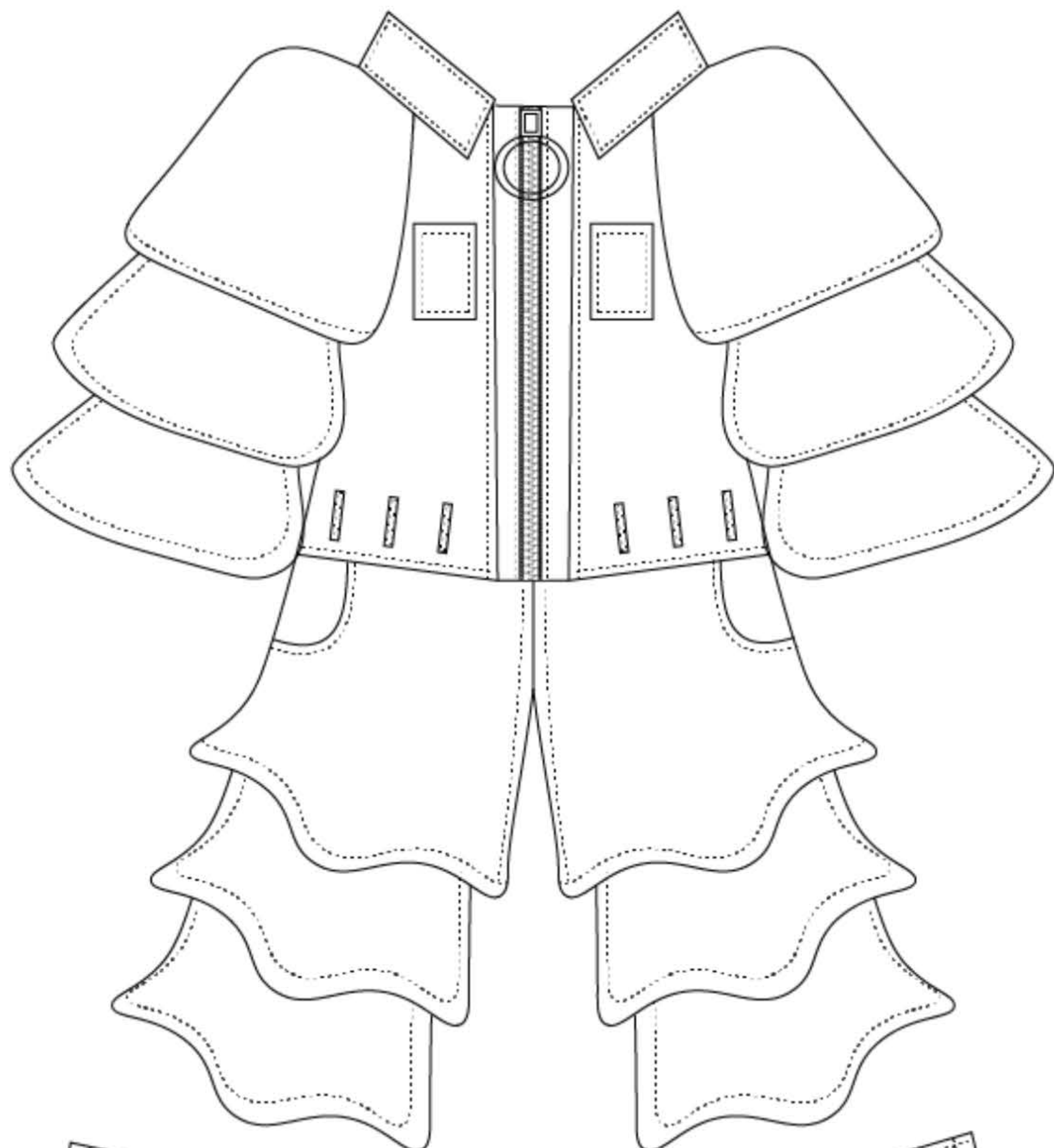
FINAL DESIGN





CREATING
THE
JUMPSUIT
ON CLO3D



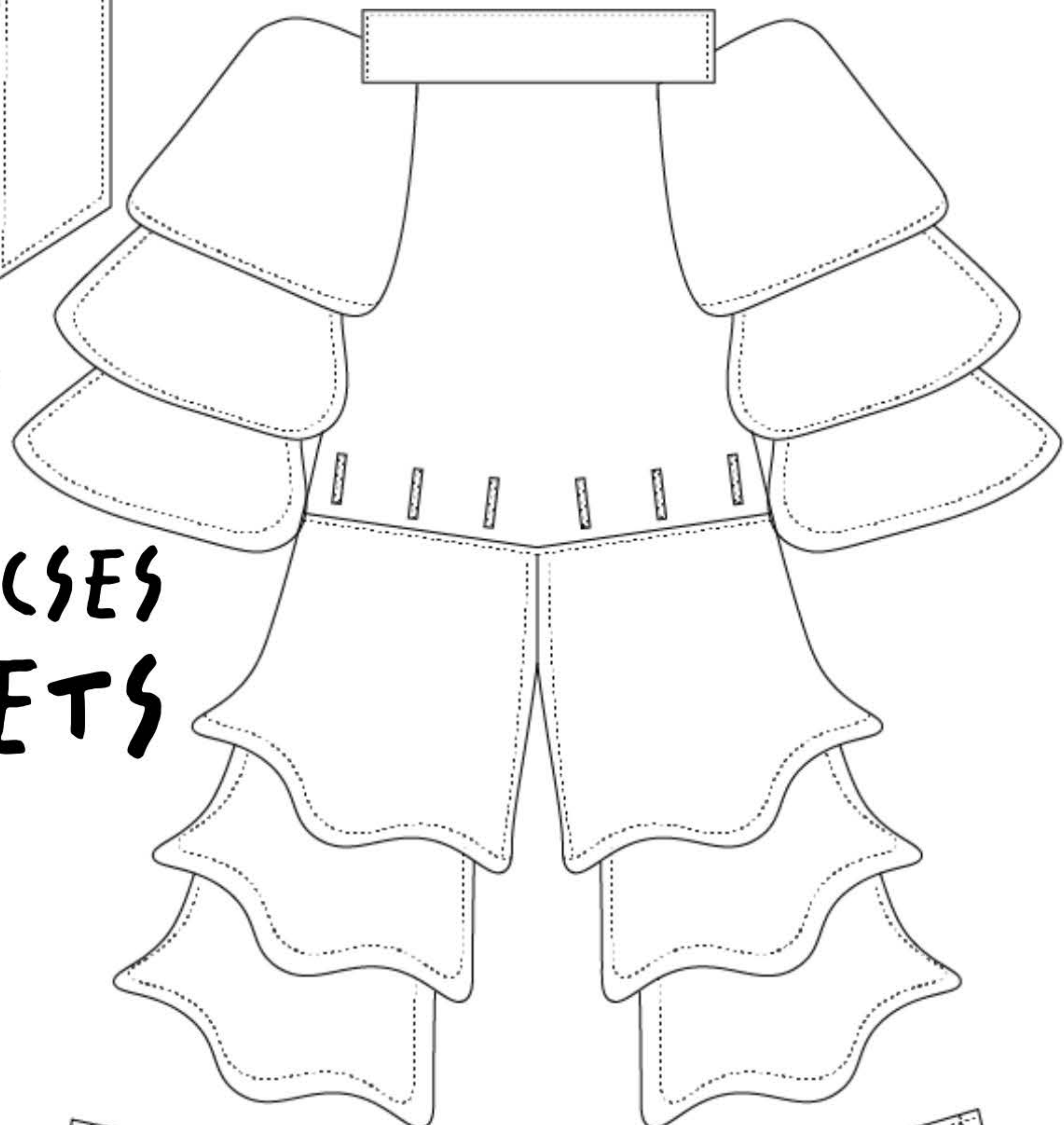
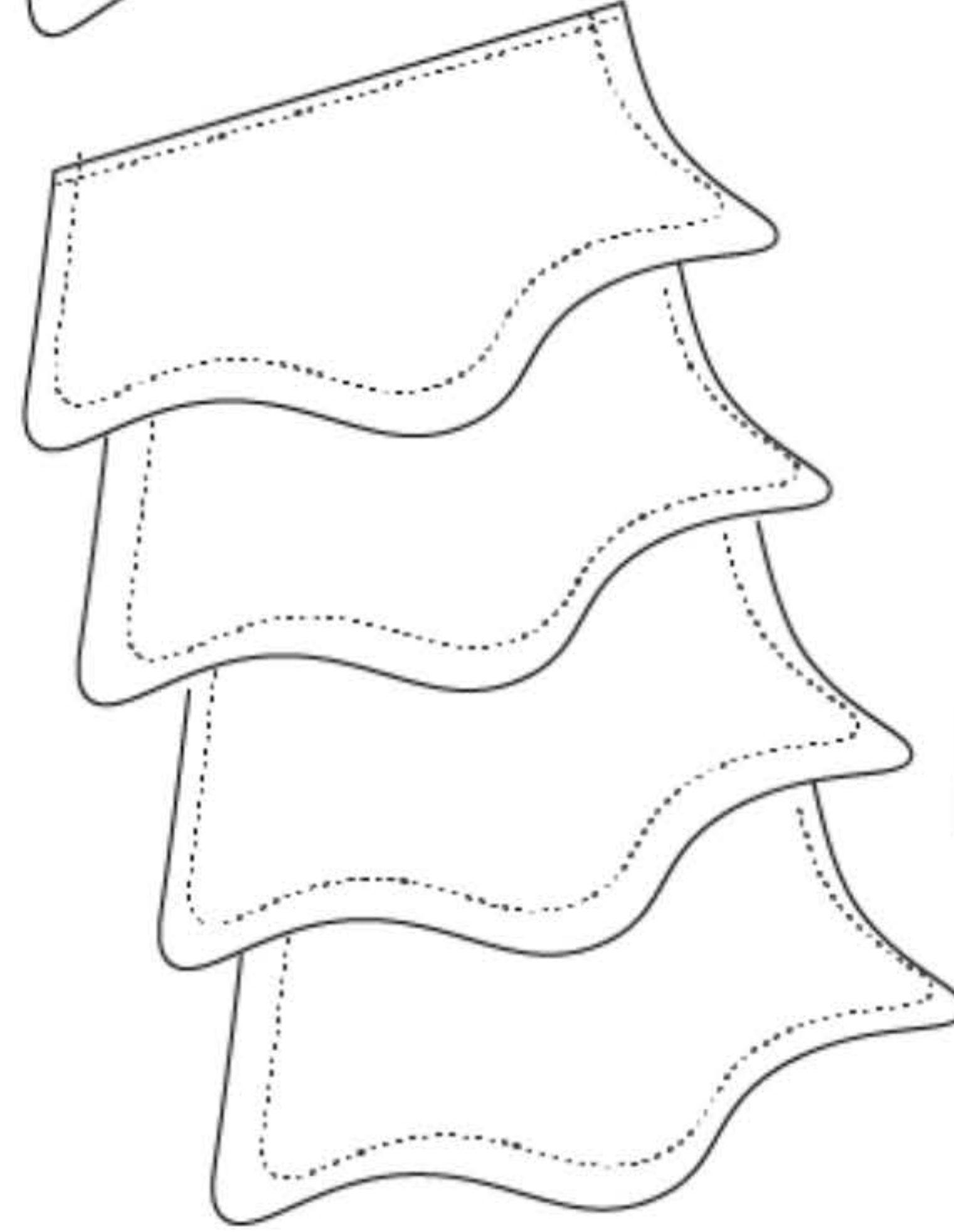
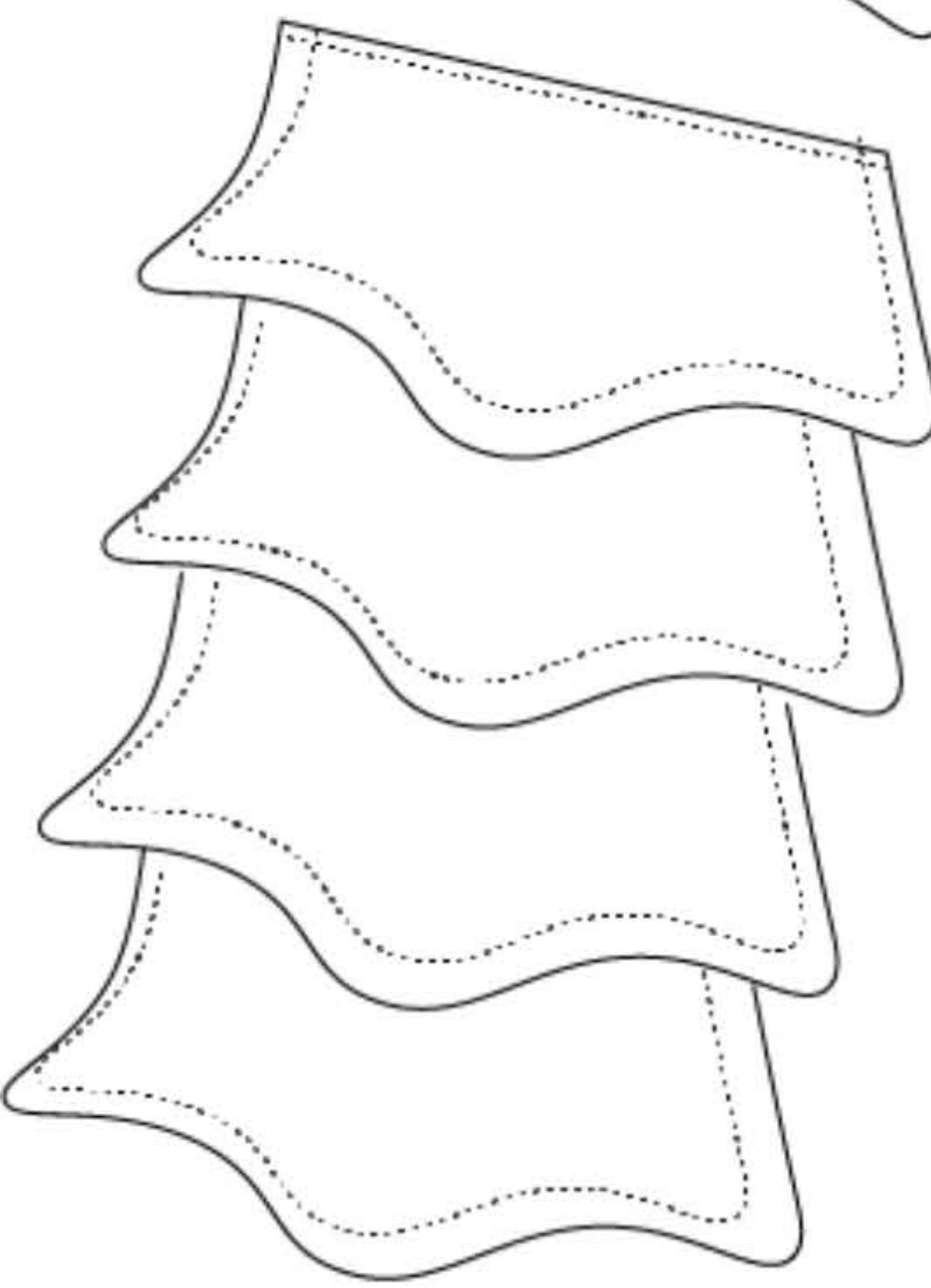


BELT
TIE FOR
COMFORT

SIZE
LARGE

SENSORY
FIRENLY SEAMS

FRONT
OPENING FOR
ACCESSABILITY

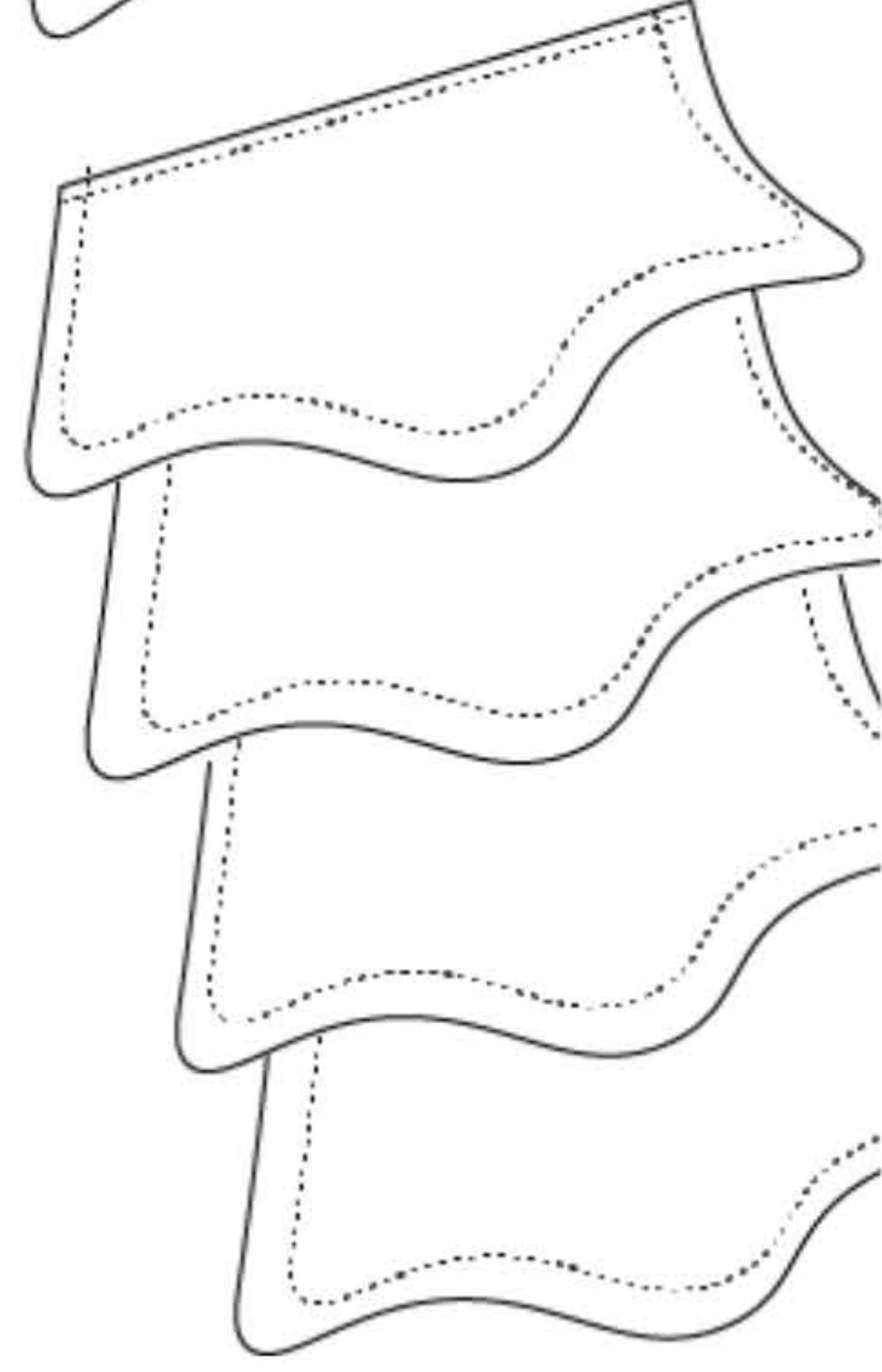
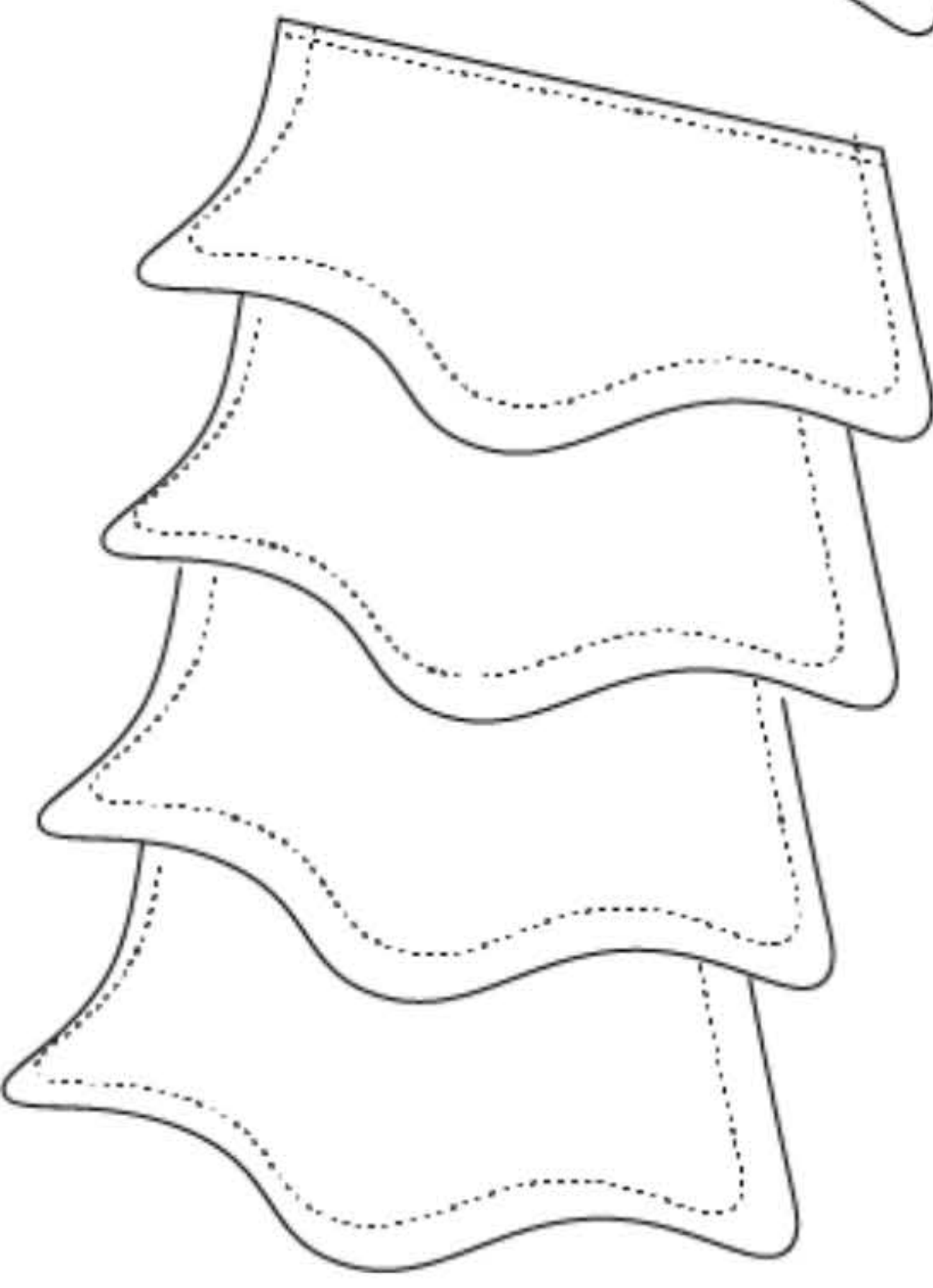


LARGE RING
ON ZIP FOR EASE

EASY ACCESS
POCKETS

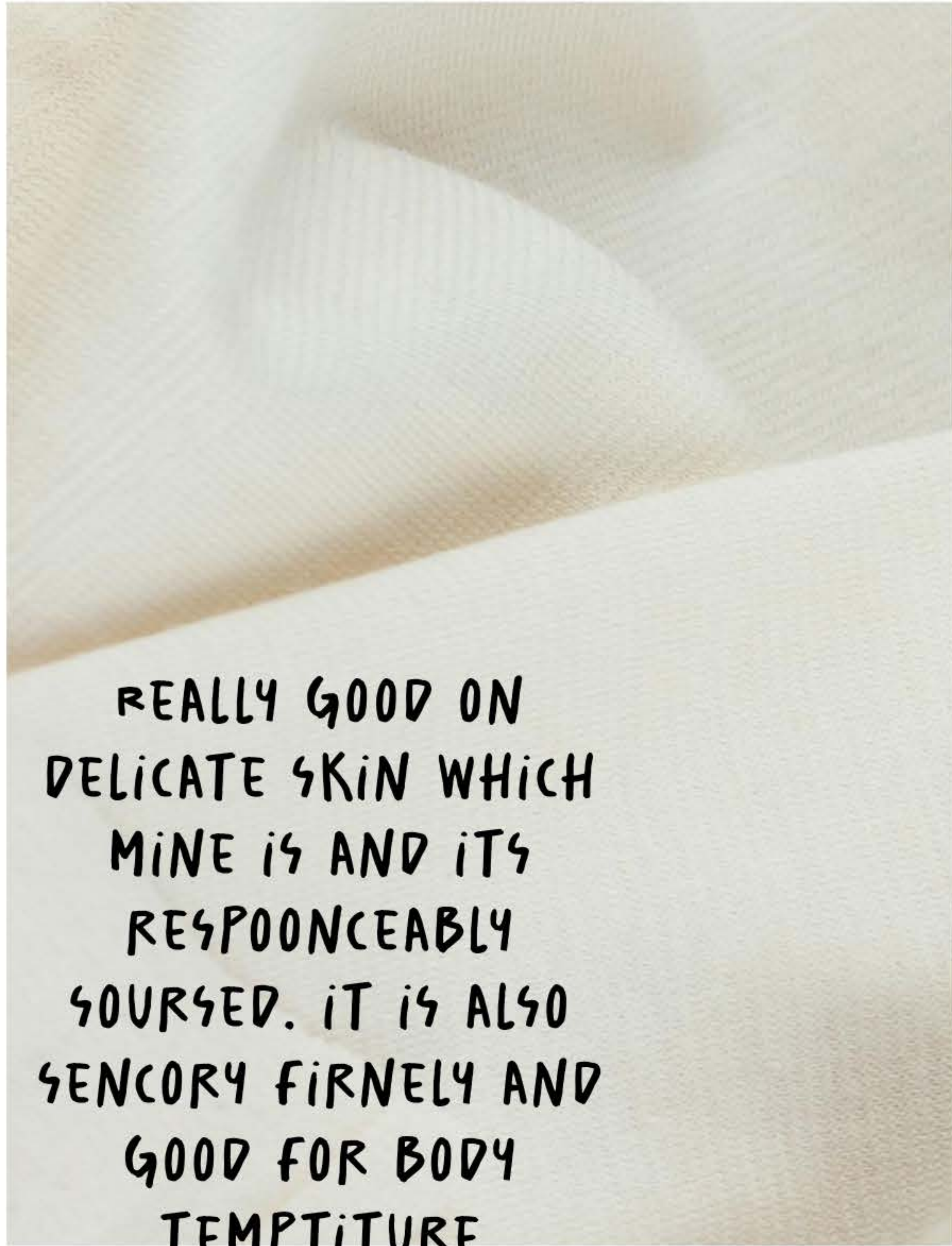
DETACHABLE
FULL LEG FOR
CHOISE OF LENGTH

TECHNICAL
DRAWING



FABRICS

SPECIFICATION



REALLY GOOD ON DELICATE SKIN WHICH MINE IS AND ITS RESPONCEABLY SOURCED. IT IS ALSO SENCORY FIRNELY AND GOOD FOR BODY TEMPTITURE REGULATION

BODY OF GARMENT

ORGANIC COTTON JERSEY FABRIC - NATURAL

100% ORGANIC COTTON

THE NATURAL IS UNDYED AND UNBLEACHED

[HTTPS://WWW.GREENFIBRES.COM/SINGLE-JE RSEY-ORGANIC-COTTON-NATURAL](https://www.greenfibres.com/single-je-ry-organic-cotton-natural)

ORGANIC JERSEY BIAS BINDING

SENCORY FIRNELY SEAMS



ADAPTIVE SMOOTH CHUNKY ZIP WITH RUBBER PULL



20 MM WIDE
3 MTRS PER PACK
95% COTTON / 5% ELASTANE

TO GO OVER THE SEAMS TO MAKE SURE THE INSIDE OF THE GARMENT IS FULLY SENCORY FIENLY. IT ALSO ADDS A STARNGER STRUCTWR TO A GARMENT BUT STUILL ALOWES FOR STRECH AND CHANGING OF THE BODY

ORGANIC 100% ORGANIC COTTON THREAD

[HTTPS://SHOPBEYONDMEASURE.CO.UK/PRODUCTS /ORGANIC-COTTON-SEW ING-THREAD](https://shopbeyondmeasure.co.uk/products/organic-cotton-sewing-thread)



EASY TO USE ZIP WITH THE RUBBER RING BEING EASIER FOR DOING THE GARMENT UP. THUIS ZIP IS ADAPTIVE AS IT HAS A SLEEK MOVEMENT.