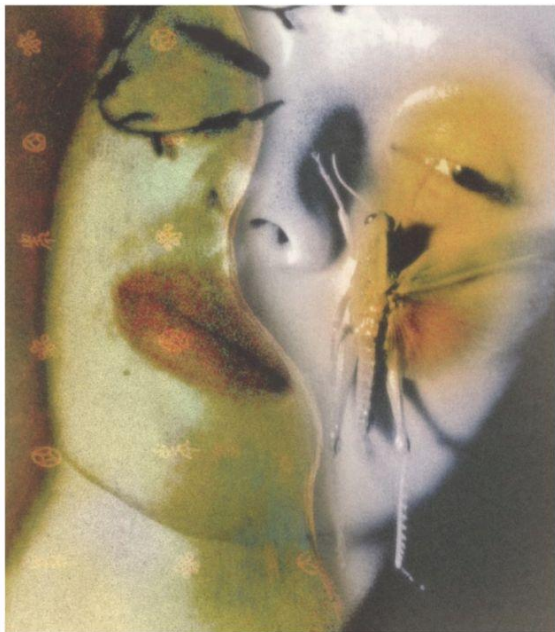




**WITCHCRAFT
CHRONICLES**



AS A DESIGNER, MY MISSION WITH "WITCHCRAFT CHRONICLES" IS A PROFOUND NARRATIVE ABOUT THE INDOMITABLE SPIRIT OF WOMEN WHO WERE WRONGLY ACCUSED DURING HISTORICAL WITCH HUNTS. THIS COLLECTION IS MY CANVAS TO CHALLENGE HISTORICAL INJUSTICES, TO SHINE A LIGHT ON THE UNTOLD STORIES OF THESE RESILIENT WOMEN, AND TO PAY HOMAGE TO THEIR STRENGTH, SPIRITUALITY, AND THE HEALING POWER OF NATURE. "WITCHCRAFT CHRONICLES" IS A DECLARATION AGAINST GENDER INEQUALITY, INVITING THE WORLD TO ACKNOWLEDGE THE CONCEALED NARRATIVES WITHIN OUR HISTORY. THROUGH EACH DESIGN, MY INTENTION IS TO EVOKE EMPATHY, ADMIRATION, AND EMPOWERMENT, REMINDING US ALL OF THE ENDURING POWER OF THE FEMININE SPIRIT.

THE ESSENCE OF "WITCHCRAFT CHRONICLES" IS WOVEN INTO ITS VERY FABRIC—BOTH LITERAL AND METAPHORICAL. INSPIRED BY THE HERBAL WISDOM OF WOMEN ACCUSED OF WITCHCRAFT, I'VE METICULOUSLY SOURCED MATERIALS THAT TELL A STORY. NATURAL HERBAL DYES, LOVINGLY APPLIED TO ROPE, WOOL, COTTON, AND LINEN, SERVE AS A SYMBOL OF THESE WOMEN'S PROFOUND KNOWLEDGE OF THE HEALING PROPERTIES OF PLANTS. THIS CHOICE ALIGNS WITH OUR COMMITMENT TO SUSTAINABILITY AND ETHICAL FASHION, CONNECTING THE PAST WITH CONTEMPORARY DESIGN. THEY ENCAPSULATE THE REVERENCE FOR HISTORY, CONTEMPLATION, AND EMPOWERMENT WHILE SHOWCASING THE PRACTICAL SKILLS AND SPIRITUAL CONNECTIONS OF THE PERSECUTED WOMEN.

FOR ME, "WITCHCRAFT CHRONICLES" IS MORE THAN A COLLECTION; IT'S A PLATFORM TO SPARK ESSENTIAL CONVERSATIONS. THROUGH MY DESIGNS, I SEEK TO IGNITE DIALOGUES AROUND FEMINISM, EMPOWERMENT, AND THE UNWAVERING SPIRIT OF THESE WOMEN. I BELIEVE IT'S CRITICAL TO LEARN FROM OUR PAST, TO ACKNOWLEDGE THE STORIES THAT HAVE REMAINED CONCEALED, AND TO CELEBRATE THE STRENGTH AND WISDOM OF THESE PERSECUTED WOMEN. "WITCHCRAFT CHRONICLES" IS A TESTAMENT TO THEIR RESILIENCE, AN EXPLORATION OF THE FEMININE MYSTIQUE, AND A CALL TO REMEMBER AND HONOR THESE REMARKABLE WOMEN WHO DEFIED PERSECUTION AND SOCIETAL NORMS, INSPIRING US TO REFLECT ON THE STRENGTH AND WISDOM OF THE HUMAN SPIRIT.

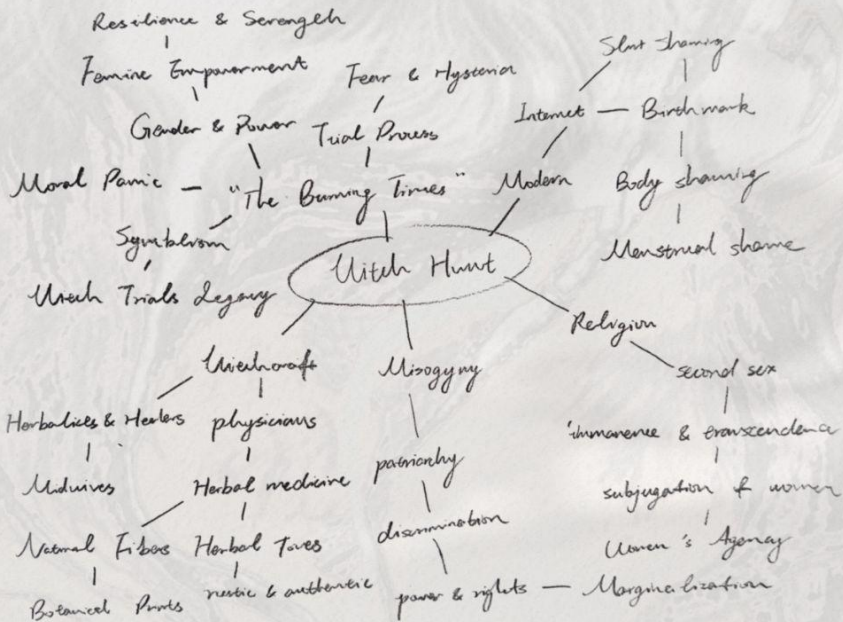
WITCHCRAFT CHRONICLES

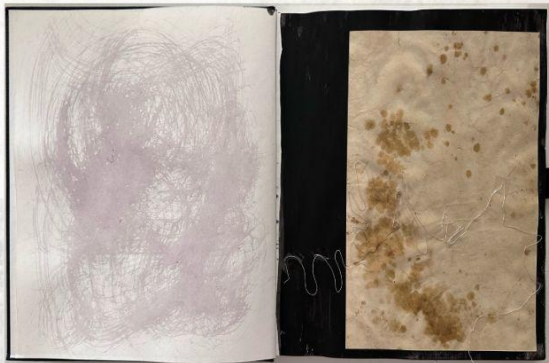
HERITAGE REVERIE—IN "WITCHCRAFT CHRONICLES," "HERITAGE REVERIE" TRANSPORTS US TO A TIMELESS SPACE, INVOKING NOSTALGIA AND REVERENCE FOR OUR HISTORICAL HERITAGE. THESE GARMENTS EMBODY THE ECHOES OF UNTOLD STORIES, INVITING US TO RESPECT AND HONOR THE STRENGTH AND RESILIENCE THAT HAVE SHAPED OUR WORLD.

HERBAL ODYSSEY—"HERBAL ODYSSEY" IS THE JOURNEY INTO HERBAL WISDOM DEFINING OUR DESIGNS. IT DRAWS FROM NATURE'S HEALING SECRETS AND THE INDOMITABLE SPIRIT OF WOMEN ACCUSED OF WITCHCRAFT. THESE GARMENTS ARE VESSELS OF SPIRITUAL CONNECTIONS AND DEFIANCE AGAINST SOCIETAL NORMS, INVITING WEARERS TO EMBARK ON A VOYAGE WHERE NATURE'S WISDOM AND HUMAN RESILIENCE INTERTWINE.

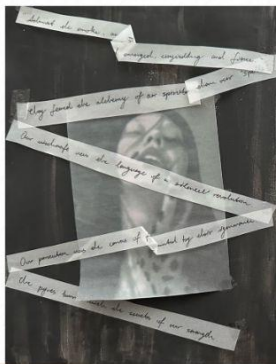
SENSUAL NATURE—WITHIN "WITCHCRAFT CHRONICLES," "SENSUAL NATURE" EMBODIES THE ORGANIC ALLURE AND TACTILE DELIGHT OF EACH PIECE. THROUGH FABRICS, TEXTURES, AND COLORS, IT CONNECTS US TO THE WORLD'S SENSUALITY. IT CELEBRATES OUR CONNECTION WITH NATURE, ENCOURAGING US TO EMBRACE ITS SENSUOUS QUALITIES, BOTH EXTERNAL AND WITHIN OURSELVES.

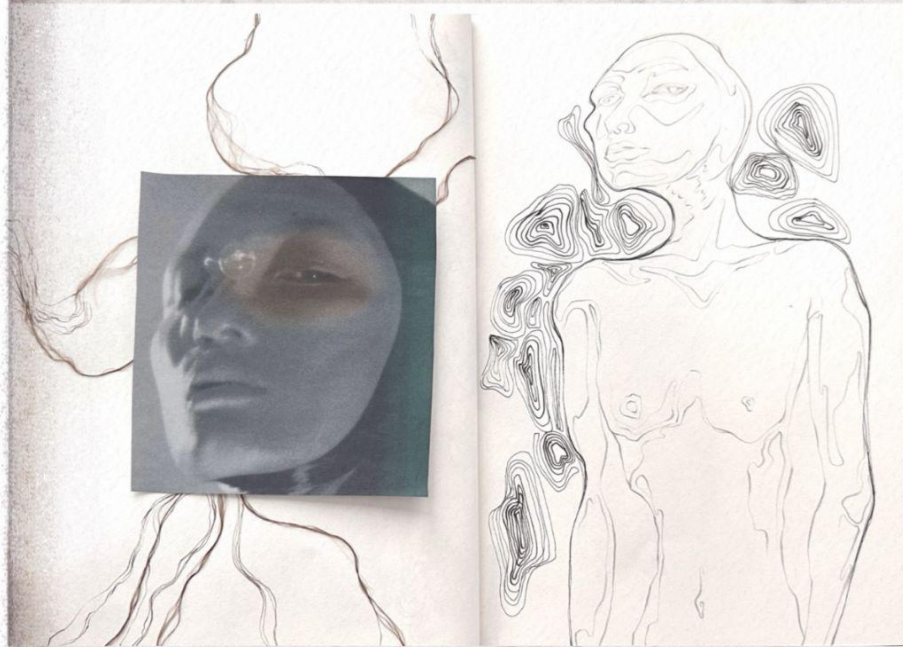
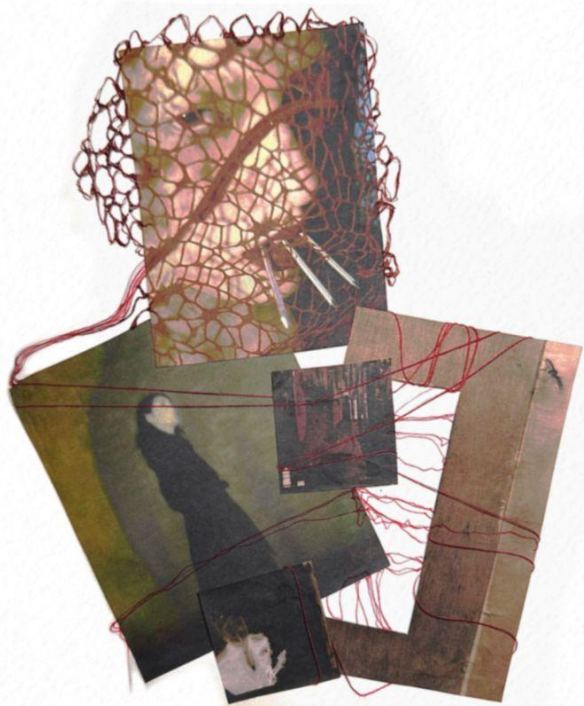
FEMININE TRANSCENDENCE—"FEMININE TRANSCENDENCE" SIGNIFIES THE ELEVATION OF FEMININE STRENGTH, KNOWLEDGE, AND RESILIENCE. THESE DESIGNS EMPOWER WOMEN TO RISE ABOVE OPPRESSION AND TRANSCEND SOCIETAL CONSTRAINTS, EMBODYING THE SPIRIT OF THOSE WHO FACED PERSECUTION. THEY REMIND US THAT THE FEMININE SPIRIT CAN RISE ABOVE ADVERSITY, INSPIRING AND SHAPING OUR WORLD.





QUICK
TO JUDGE
TO ANGER
BY IGNORANCE
AND PREJUDICE
BY FEAR
TO WALK WITH
HANDS IN HAND



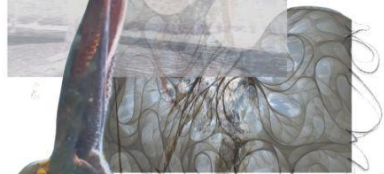




BODY

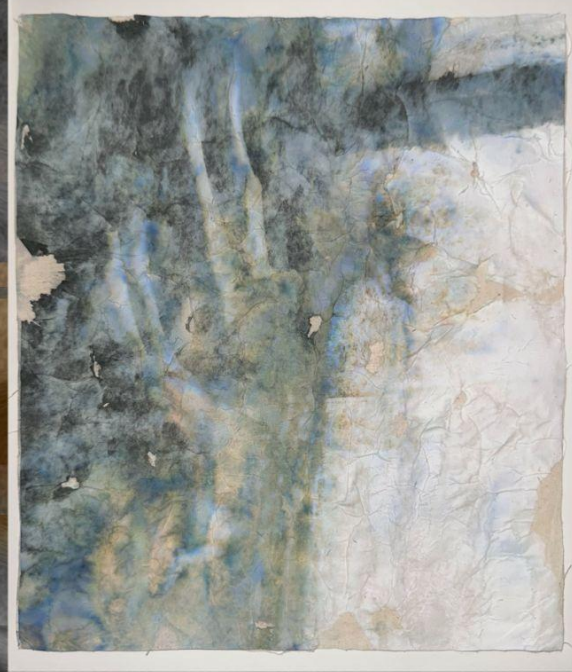
MIND

CHOICE



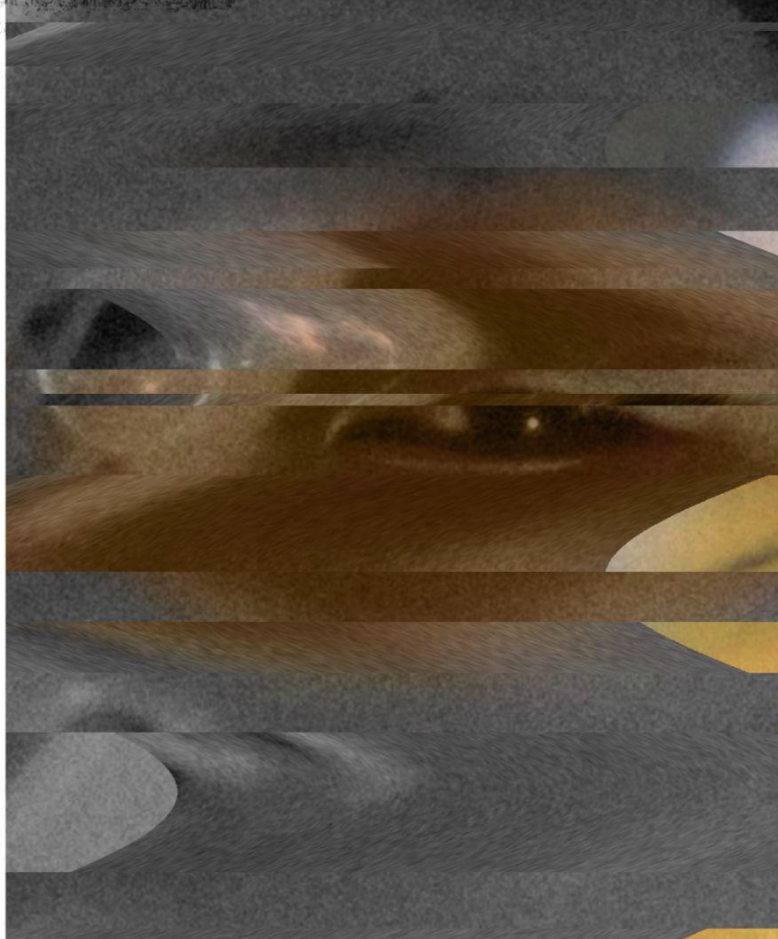


In a nod to traditional craftsmanship and eco-conscious practices, I've employed plant-based dyes derived from herbs such as indigo, madder root, and chamomile to color these fabrics. These natural dyes not only imbue the garments with a rich, earthy palette but also reflect a commitment to environmental stewardship by eschewing harmful chemicals and minimizing water consumption.



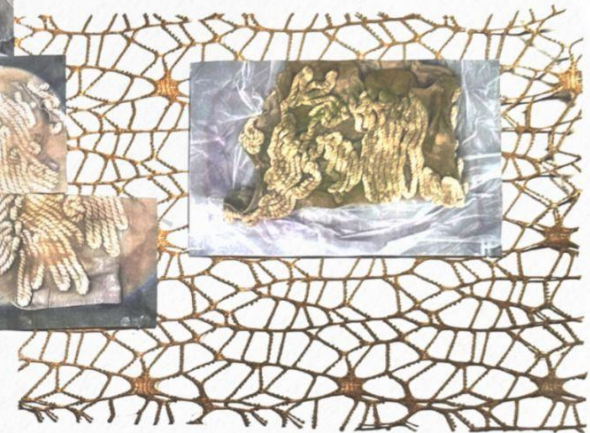


Crafted exclusively from natural fibers and materials, ensuring sustainability lies at its core. I've meticulously curated materials such as organic cotton, linen, and wool, sourced ethically to minimize environmental impact.





Black Tea
Beet Root
Blauholz
Coral Can Fruit







Shape of herbs as inspiration. highlighting feminine qualities while also emphasizing strength & a sense of vigilance.



- bust
- Waist
- Bod
- Attachment



Draped herbs





